

COUNTRY CLUB ESTATES BRADFORD COUNTY, FLORIDA

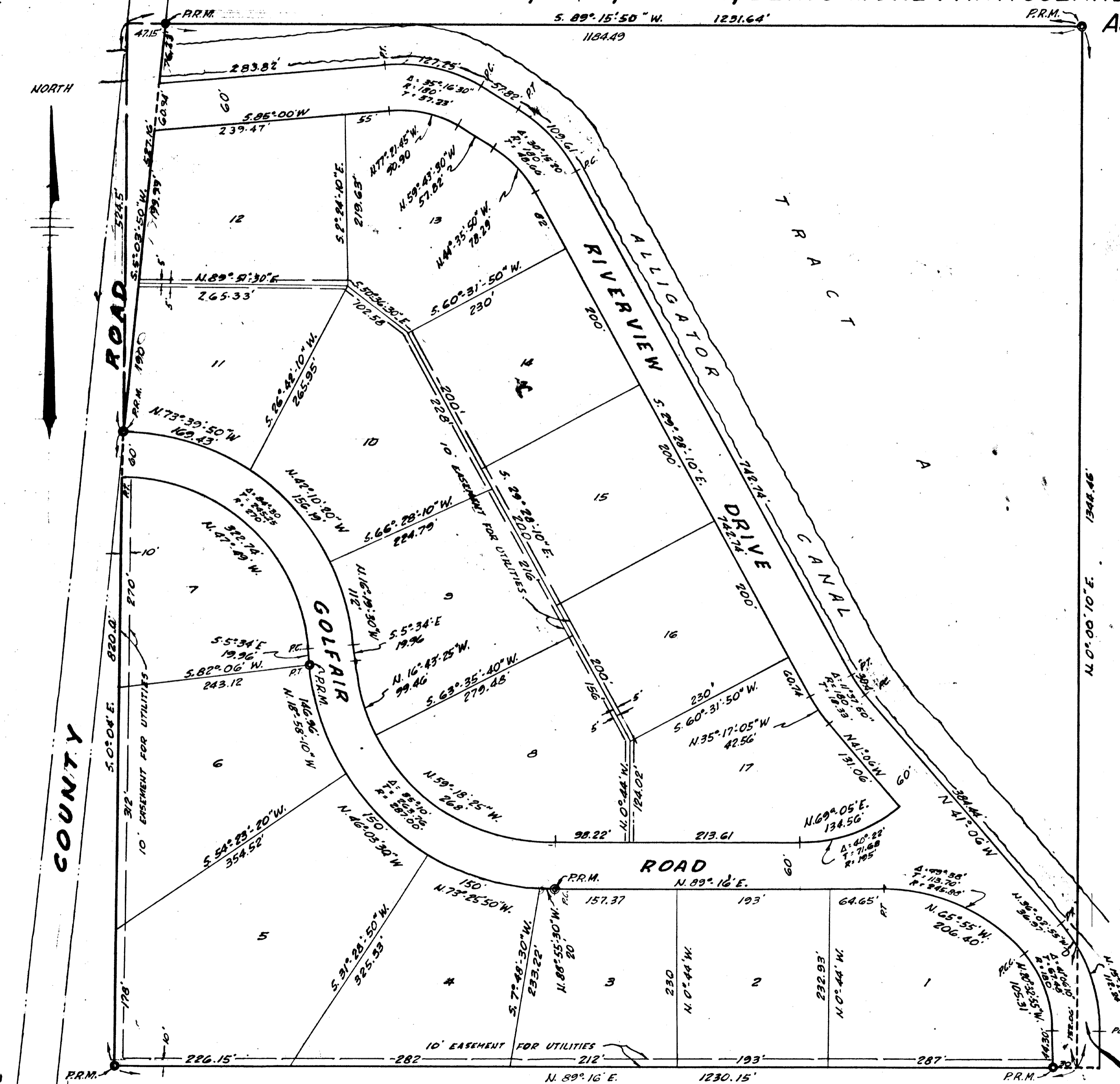
A SUBDIVISION OF A PORTION OF THE S.W. 1/4 OF THE
N.E. 1/4 OF SECTION 26, T.6S., R.22E., BEING MORE PARTICULARLY DESCRIBED

AS FOLLOWS:

For Restrictions
of this plat - see
on Book 67 - Page 41
this 1st day of December
1967.

Attest: Charles A. Darby
Clerk Circuit Court
By *[Signature]*

BOOK 3 PAGE 22
See additional Restrictions by this Plat
see on Book 98 page 71 this 25
Day of Jan 1972
Attest: Gilbert S. Brown
Clerk Circuit Court
By *[Signature]*



CAPTION:
Commence at the Southeast corner of aforesaid S.W. 1/4 of NE. 1/4 and run thence
N. 0° 00' 10\"/>

ADOPTION AND DEDICATION
This is to certify that the undersigned are the lawful owners of the land described in the
caption hereof, that they have caused the same to be surveyed and subdivided, and that this
plat, made in accordance with said survey, is hereby adopted as the true and correct plat
of said lands, and all drives and roads shown upon said plat are hereby irrevocably
and without reservation dedicated to Bradford County, Florida.

In witness whereof these presents are signed this 6th day of June A.D. 1961

Signed and Sealed
in the presence of
[Signature] *[Signature]* (SEAL)
[Signature] *[Signature]* (SEAL)

STATE OF FLORIDA
COUNTY OF BRADFORD
I hereby certify that on this day personally appeared before me, an officer duly
authorized to administer oaths, and take acknowledgements, GUY ANDREWS and
ELIZABETH S. ANDREWS, his wife, to me well known to be the persons described in and
who executed the foregoing dedication and who severally acknowledged before me
that they executed the same freely and voluntarily for the purposes therein expressed
Witness my signature and official seal at Starke, in the County of Bradford
and State of Florida this 6th day of June A.D. 1961

[Signature]
Notary Public, State of Florida at Large
My Commission Expires Nov. 28, 1964

APPROVED FOR RECORD
This is to certify that this plat has been examined and is hereby accepted and
approved by the Board of County Commissioners of Bradford County, Florida
Signed this 6th day of June A.D. 1961

BOARD OF COUNTY COMMISSIONERS
Attest: *[Signature]* by *[Signature]*
Clerk Chairman

CLERK'S CERTIFICATE:
I hereby certify that this plat has been examined and that it complies in form
with Chapter 10275, Laws of Florida of 1925, and is filed for record and recorded
in Plat Book 3 Page 22 of the public records of Bradford County, Florida,
this 6th day of June A.D. 1961

[Signature]
Clerk
Deputy Clerk

SURVEYORS CERTIFICATE:
This is to certify that the above plat is a correct representation of the lands surveyed
and platted and described above, that permanent reference monuments have been
placed according to the laws of Florida.
Signed this 6th day of June A.D. 1961

[Signature]
Reg. Land Surveyor No. 391

NOTE: DISTANCES AND BEARINGS ON CURVES REFER TO THE CHORDS
PERMANENT REFERENCE MONUMENTS SHOWN THUS: P.P.M.

NOT INCLUDED
IN THIS PLAT