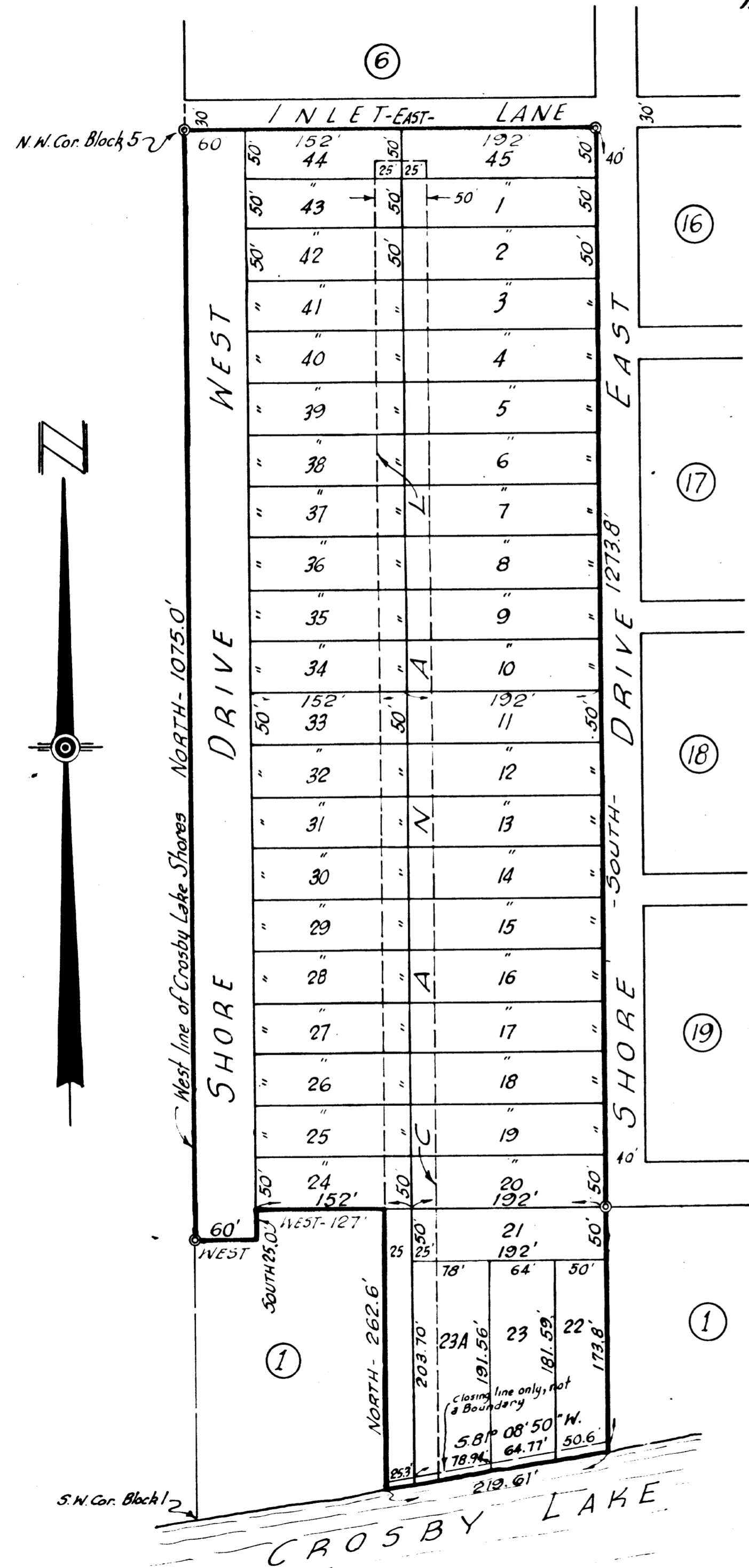
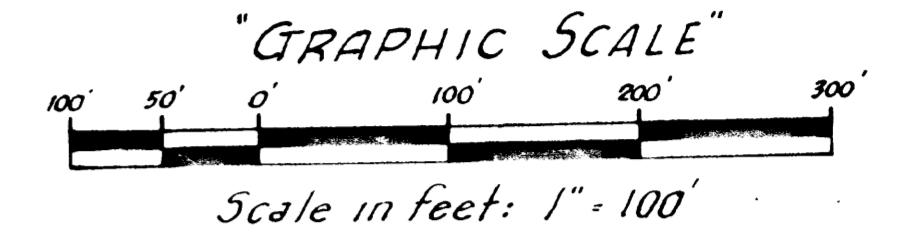


CROSBY LAKE INLET

BRADFORD COUNTY, FLORIDA.



A REPLAT OF A PORTION OF BLOCK 1, AND ALL OF BLOCKS 2, 3, 4 & 5, AND THOSE PORTIONS OF STREETS LYING BETWEEN SAID BLOCKS, CROSBY LAKE SHORES ACCORDING TO PLAT BOOK 2, PG. 17 OF THE PUBLIC RECORDS OF BRADFORD COUNTY, FLORIDA.



ADOPTION AND DEDICATION

This is to certify that the undersigned are the lawful owners of the land described in the caption hereon, that they have caused the same to be surveyed and subdivided, and that this plat, made in accordance with said survey is hereby adopted as the true and correct plat of said lands, and all Drives shown upon said plat are hereby irrevocably and without reservation dedicated to Bradford County, Florida.

In witness whereof these presents are signed this 22nd day of Sept. A.D. 1969.

Diane D. Slane Witness
Patricia A. Baldwin Witness
Diane D. Slane Witness
Patricia A. Baldwin Witness

J. H. Slade (Seal)
Joanne S. Sawyer (Seal)
Flora J. Slade (Seal)
J. C. Sawyer (Seal)

STATE OF FLORIDA COUNTY OF BRADFORD

I hereby certify that on this day personally appeared before me, an officer duly authorized to administer oaths and take acknowledgements, T. H. Slade and Flora J. Slade, his wife, and J. C. Sawyer and Joanne S. Sawyer, his wife, to me well known to be the persons described in and who executed the foregoing and, who severally acknowledged before me that they executed the same freely and voluntarily for the purposes therein expressed.

Witness my signature and official seal at Starke in the County of Bradford and State of Florida this 22nd day of Sept. A.D. 1969.

Stoddard M. Shenton
 Notary Public State of Florida at large
 My Commission expires: September 18, 1973

APPROVED FOR RECORD

This is to certify that this plat has been examined and is hereby accepted and approved by the Board of County Commissioners of Bradford County, Florida. Signed this 22nd day of Sept. A.D. 1969.

BOARD OF COUNTY COMMISSIONERS

Charles A. Dault
 Clerk

[Signature]
 Chairman

CLERKS CERTIFICATE

I hereby certify that this plat has been examined and that it complies in form with chapter 10275, laws of the State of Florida, of 1925, and is filed for record and recorded in Platbook 3, page 31 of the public records of Bradford County, Florida, this 22nd day of Sept. A.D. 1969.

Charles A. Dault
 Clerk

[Signature]
 Deputy Clerk

SURVEYORS CERTIFICATE

This is to certify that the above plat is a correct representation of the lands surveyed and platted and described above, that Permanent Reference Monuments have been placed according to the laws of Florida.

Signed this 22nd day of Sept. A.D. 1969.

M. G. McMillan
 Registered Surveyor
 Starke, Florida
M. G. McMillan
 Registered Surveyor Certificate No. 391

NOTE: Lots, Extend to center of canal.
 • Denotes Permanent Reference Monument