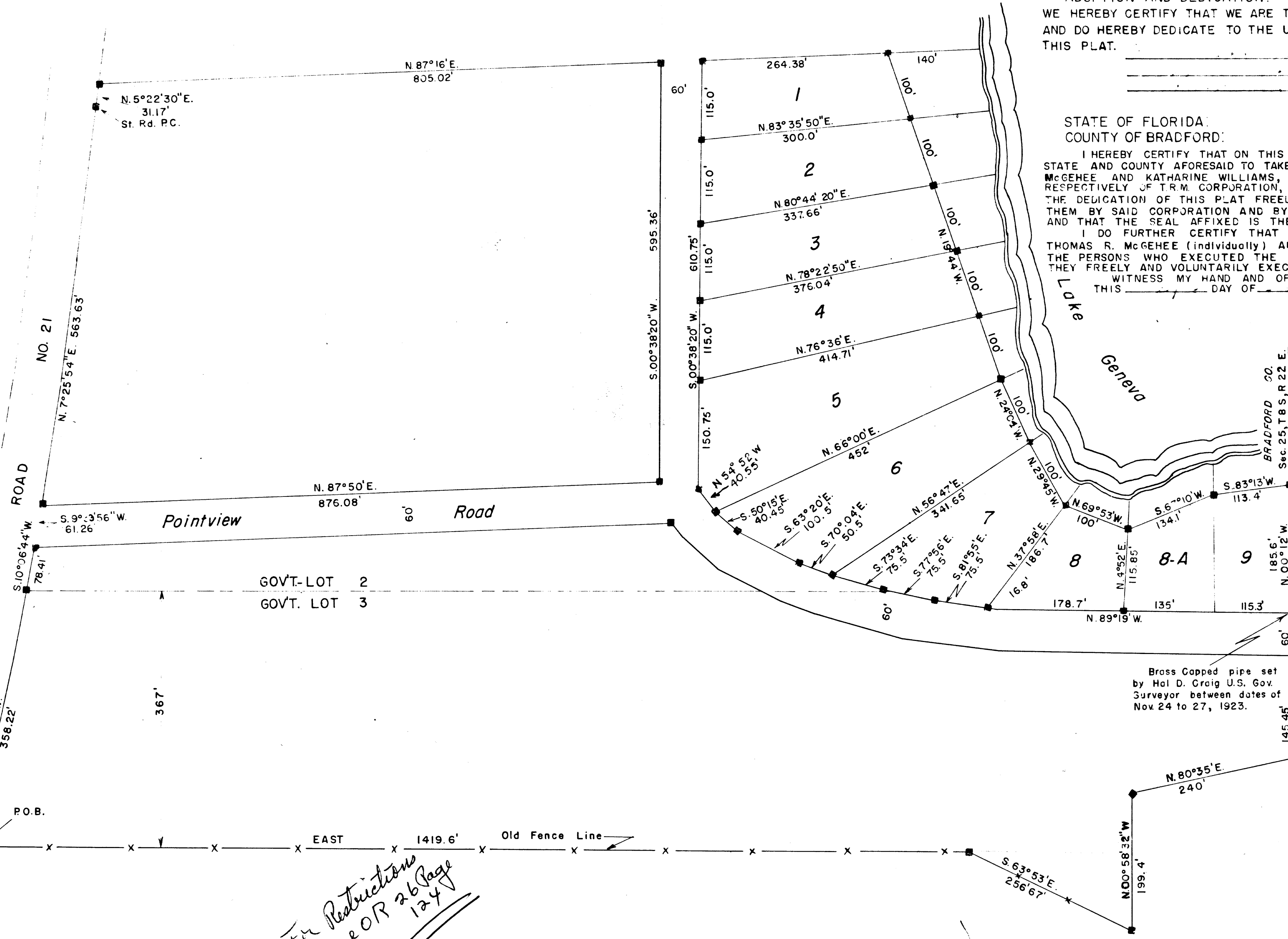


"GENEVA POINT ESTATES"

BEGINNING AT A CONCRETE MONUMENT LOCATED ON THE EASTERLY SIDE OF ST. RD. NO. 21 AS IT IS NOW LOCATED, SAID MONUMENT BEING 2114' E. OF THE W. LINE OF THE NE 1/4 OF THE W 1/4 AND 367' S. OF THE N. LINE OF GOV. LOT 3 OF SEC. 25, T 8 S, R 22 E, THENCE CONTINUE E. ALONG A LINE PARALLEL TO THE N. LINE OF GOV. LOT 3 AND 367' S. THEREOF, 1419.6' TO A CONC. MONUMENT (this line being marked by the old fence which stands as the boundary between the Alderman and Fredrickson property) THENCE, S 63°53'E. A DISTANCE OF 256.67' TO THE WATERS OF LAKE GENEVA. THENCE ALONG THE WATERS EDGE BEARING N. 00°58'32"W. A DISTANCE OF 199.4' THENCE N 80°35'E. 240' TO THE LINE BETWEEN RANGE 22 AND 23 ALSO BEING THE LINE BETWEEN CLAY AND BRADFORD COUNTIES, THENCE N. 00°12' W. ALONG THE RANGE LINE A DISTANCE OF 391.05' TO A CONCRETE MONUMENT ON THE EDGE OF LAKE GENEVA THENCE, S. 83°13' W. 113.4' TO A CONC. MONUMENT, THENCE S. 67°10' W. 134.1' TO A CONC. MONUMENT, THENCE, N. 69°53' W. 100' TO A MONUMENT THENCE, N. 29°45' W. 100' TO A MONUMENT THENCE, N. 24°04' W. 100' TO A MONUMENT THENCE, N. 19°44' W. 500' TO A MONUMENT THENCE, THENCE, S. 87°16' W. 1129.4' TO A CONC. MONUMENT LOCATED ON THE EASTERLY SIDE OF ST. RD. NO. 21, THENCE SOUTHWESTERLY ALONG THE CURVE OF THE ROAD THROUGH THE FOLLOWING BEARINGS AND DISTANCES, S 5°22'30"W. 31.17' THENCE, S. 7°25'54"W. 563.63' THENCE, S. 9°39'56"W. 61.26' THENCE, S. 10°06'44"W. 78.41' THENCE S. 10°28' W. 358.22' TO THE P.O.B. BEING PART OF GOV. LOTS 2 & 3 OF SEC. 25, T 8 S, R 22 E., BRADFORD COUNTY, FLORIDA.

"SCALE"
1 INCH = 100 FEET
■ INDICATES P.R.M.



ADOPTION AND DEDICATION:
WE HEREBY CERTIFY THAT WE ARE THE LAWFUL OWNERS OF THE PROPERTY DESCRIBED HEREON AND DO HEREBY DEDICATE TO THE USE OF THE PUBLIC FOREVER THE STREETS AS SHOWN ON THIS PLAT.

_____, WITNESS
_____, WITNESS
_____, WITNESS

_____, SEAL
_____, SEAL
_____, SEAL

STATE OF FLORIDA
COUNTY OF BRADFORD:

I HEREBY CERTIFY THAT ON THIS DAY, BEFORE ME, AN OFFICER DULY AUTHORIZED IN THE STATE AND COUNTY AFORESAID TO TAKE ACKNOWLEDGEMENTS, PERSONALLY APPEARED THOMAS R. McGEHEE AND KATHARINE WILLIAMS, WELL KNOWN TO ME TO BE THE PRESIDENT AND SECRETARY RESPECTIVELY OF T.R.M. CORPORATION, AND THEY SEVERALLY ACKNOWLEDGED THAT THEY EXECUTED THE DEDICATION OF THIS PLAT FREELY AND VOLUNTARILY UNDER AUTHORITY DULY VESTED IN THEM BY SAID CORPORATION AND BY AND WITH AUTHORITY OF ITS BOARD OF DIRECTORS, AND THAT THE SEAL AFFIXED IS THE TRUE CORPORATE SEAL OF SAID CORPORATION.

I DO FURTHER CERTIFY THAT ON THIS DAY, BEFORE ME, PERSONALLY APPEARED THOMAS R. McGEHEE (individually) AND HIS WIFE DELIA H. McGEHEE, TO ME KNOWN TO BE THE PERSONS WHO EXECUTED THE FOREGOING DEDICATION, AND THEY ACKNOWLEDGED THAT THEY FREELY AND VOLUNTARILY EXECUTED THE SAME.

WITNESS MY HAND AND OFFICIAL SEAL IN THE STATE AND COUNTY AFORESAID THIS _____ DAY OF _____, A.D. 1962.

NOTARY PUBLIC
STATE OF FLORIDA AT LARGE
MY COMMISSION EXPIRES: _____

THIS IS TO CERTIFY THAT THE ACCOMPANYING PLAT IS A TRUE AND CORRECT REPRESENTATION OF THE LAND SURVEYED AND PLATTED HEREON AND THAT P.R.M.'S HAVE BEEN SET AS CALLED FOR UNDER CHAPTER 177.07, LAWS OF FLORIDA.

Paul S. Williams
REG. FEA. CERT. NO. 770

I HEREBY CERTIFY THAT THIS PLAT HAS BEEN EXAMINED AND THAT IT COMPLIES IN FORM WITH CHAPTER NO. 177 LAWS OF STATE FLORIDA AND IS FILED FOR RECORD IN BRADFORD COUNTY, FLORIDA THIS 6th DAY OF March 1962.

Charles A. Farby
CLERK OF CIRCUIT COURT
BRADFORD CO., FLA.

I HEREBY APPROVE THIS PLAT FOR RECORD IN BRADFORD CO., FLA.

Earl Owsen
CHAIRMAN BOARD OF CO. COMMISSIONERS

Brass Capped pipe set by Hal D. Craig U.S. Gov. Surveyor between dates of Nov 24 to 27, 1923.

For Restrictions see OR 26 Page 124