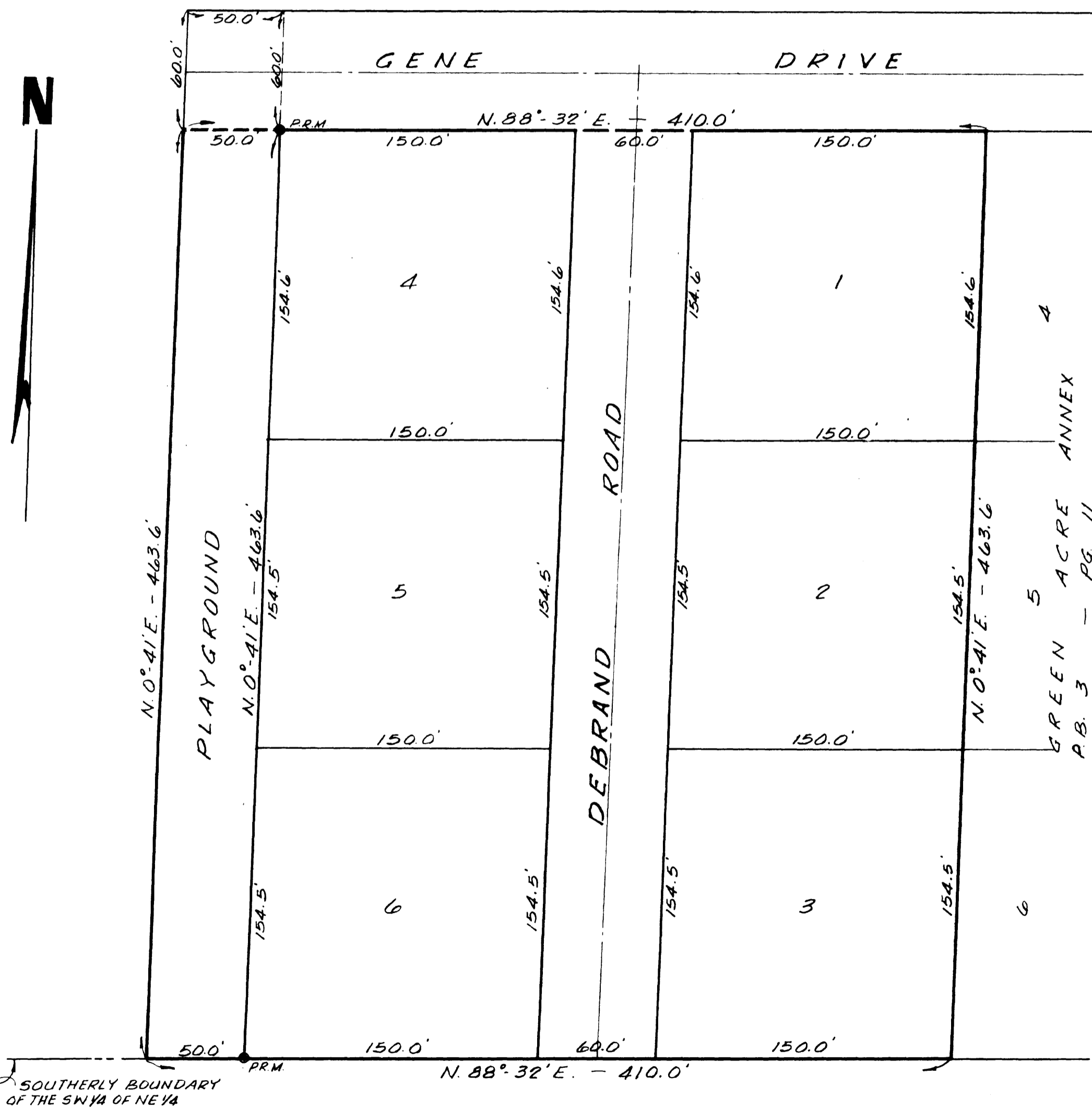
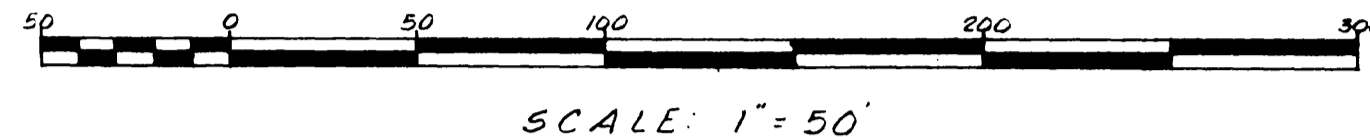


GREEN ACRES ANNEX NO. 2
BRADFORD COUNTY, FLORIDA

A REPLAT OF TRACT A, GREEN ACRES ANNEX, ACCORDING TO PLAT RECORDED IN THE PUBLIC RECORDS OF SAID COUNTY IN PLAT BOOK 3 PAGE 11, TOGETHER WITH A PORTION OF THE SW 1/4 OF THE NE 1/4 OF SECTION 20, TOWNSHIP 6 SOUTH, RANGE 22 EAST, BEING MORE PARTICULARLY DESCRIBED IN THE CAPTION BELOW.



CAPTION:

COMMENCE AT A PERMANENT REFERENCE MONUMENT LOCATED AT THE NORTHWESTERLY CORNER OF AFOREMENTIONED TRACT A, FOR POINT OF BEGINNING AND RUN THENCE N. 0° 41' E., A DISTANCE OF 60.0 FEET TO A POINT; RUN THENCE S. 88° 32' W., A DISTANCE OF 50.0 FEET TO A POINT; RUN THENCE S. 0° 41' W., A DISTANCE OF 523.6 FEET TO AN IRON STAKE ON A WESTERLY PROLONGATION OF THE SOUTHERLY BOUNDARY OF AFOREMENTIONED TRACT A; RUN THENCE N. 88° 32' E. ALONG SAID WESTERLY PROLONGATION A DISTANCE OF 50 FEET TO A PERMANENT REFERENCE MONUMENT LOCATED AT THE SOUTHWESTERLY CORNER OF SAID TRACT A; RUN THENCE N. 0° 41' E. ALONG THE WESTERLY BOUNDARY THEREOF, A DISTANCE OF 463.6 FEET TO THE POINT OF BEGINNING.

For details see CR #9 Page 417

ADOPTION AND DEDICATION

THIS IS TO CERTIFY THAT THE UNDERSIGNED ARE THE LAWFUL OWNERS OF THE LAND DESCRIBED IN THE CAPTION HEREOF, THAT THEY HAVE CAUSED THE SAME TO BE SURVEYED AND SUBDIVIDED, AND THAT THIS PLAT MADE IN ACCORDANCE WITH SAID SURVEY IS HEREBY ADOPTED AS THE TRUE AND CORRECT PLAT OF SAID LANDS, AND ALL STREETS, ROADS, AND PLAYGROUND SHOWN UPON SAID PLAT ARE HEREBY IRREVOCABLY AND WITHOUT RESERVATION DEDICATED TO STARKE, BRADFORD COUNTY, FLORIDA AND ITS SUCCESSORS.

IN WITNESS WHEREOF THESE PRESENTS ARE SIGNED THIS 5th DAY OF JANUARY A.D. 1960

SIGNED AND SEALED IN THE PRESENCE OF

Betty S. Mathwa Lorenzo D. Green (SEAL)
Norma C. Canova Mae D. Green (SEAL)
HIS WIFE

STATE OF FLORIDA
COUNTY OF BRADFORD

I HEREBY CERTIFY THAT ON THIS DAY PERSONALLY APPEARED BEFORE ME, AN OFFICER DULY AUTHORIZED TO ADMINISTER OATHS AND TAKE ACKNOWLEDGEMENTS, LORENZO D. GREEN AND MAE D. GREEN, HIS WIFE, TO ME WELL KNOWN, AND KNOWN TO BE THE PERSONS DESCRIBED IN, AND WHO EXECUTED THE FOREGOING DEDICATION, AND WHO SEVERALLY ACKNOWLEDGED BEFORE ME THAT THEY EXECUTED THE SAME FREELY AND VOLUNTARILY FOR THE PURPOSES THEREIN EXPRESSED.

WITNESS MY SIGNATURE AND OFFICIAL SEAL AT STARKE, IN THE COUNTY OF BRADFORD AND STATE OF FLORIDA, THIS 5th DAY OF JANUARY A.D. 1960.

Betty S. Mathwa
NOTARY PUBLIC STATE OF FLORIDA
MY COMMISSION EXPIRES AUG. 19, 1960

APPROVED FOR RECORD

THIS IS TO CERTIFY THAT THIS PLAT HAS BEEN EXAMINED AND IS HEREBY ACCEPTED AND APPROVED BY THE CITY COUNCIL OF THE CITY OF STARKE, BRADFORD COUNTY, FLORIDA SIGNED THIS 5th DAY OF JANUARY A.D. 1960.

CITY COUNCIL OF STARKE, FLORIDA
BY Randall G. Blitt
ATTES Merrill Johnson
CLERK

CLERK'S CERTIFICATE

I HEREBY CERTIFY THAT THIS PLAT HAS BEEN EXAMINED AND THAT IT COMPLIES IN FORM WITH CHAPTER 10275 LAWS OF FLORIDA OF 1925 AND IS FILED FOR RECORD AND RECORDED IN PLAT BOOK 3 PAGE 12 OF THE PUBLIC RECORDS OF BRADFORD COUNTY, FLORIDA, THIS 6 DAY OF JANUARY A.D. 1960.

Charles A. Bradley
CLERK

NOTE:

PERMANENT REFERENCE MONUMENTS SHOWN THUS: PRM.

BOARD OF ADJUSTMENT

THIS IS TO CERTIFY THAT THIS PLAT HAS BEEN APPROVED BY THE BOARD OF ADJUSTMENTS OF THE CITY OF STARKE, FLORIDA THIS 5th DAY OF JANUARY A.D. 1960.

BOARD OF ADJUSTMENT
BY John A. Jarosh
CHAIRMAN
ATTES Marguerite Hall
SECRETARY

SURVEYORS CERTIFICATE

THIS IS TO CERTIFY THAT THE ABOVE PLAT IS A CORRECT REPRESENTATION OF THE LANDS SURVEYED AND PLATTED AND DESCRIBED ABOVE AND THAT PERMANENT REFERENCE MONUMENTS HAVE BEEN PLACED ACCORDING TO THE LAWS OF THE STATE OF FLORIDA.
SIGNED THIS 4th DAY OF JANUARY A.D. 1960.

M. S. M. Miller
REG. LAND SURVEYOR NO. 891