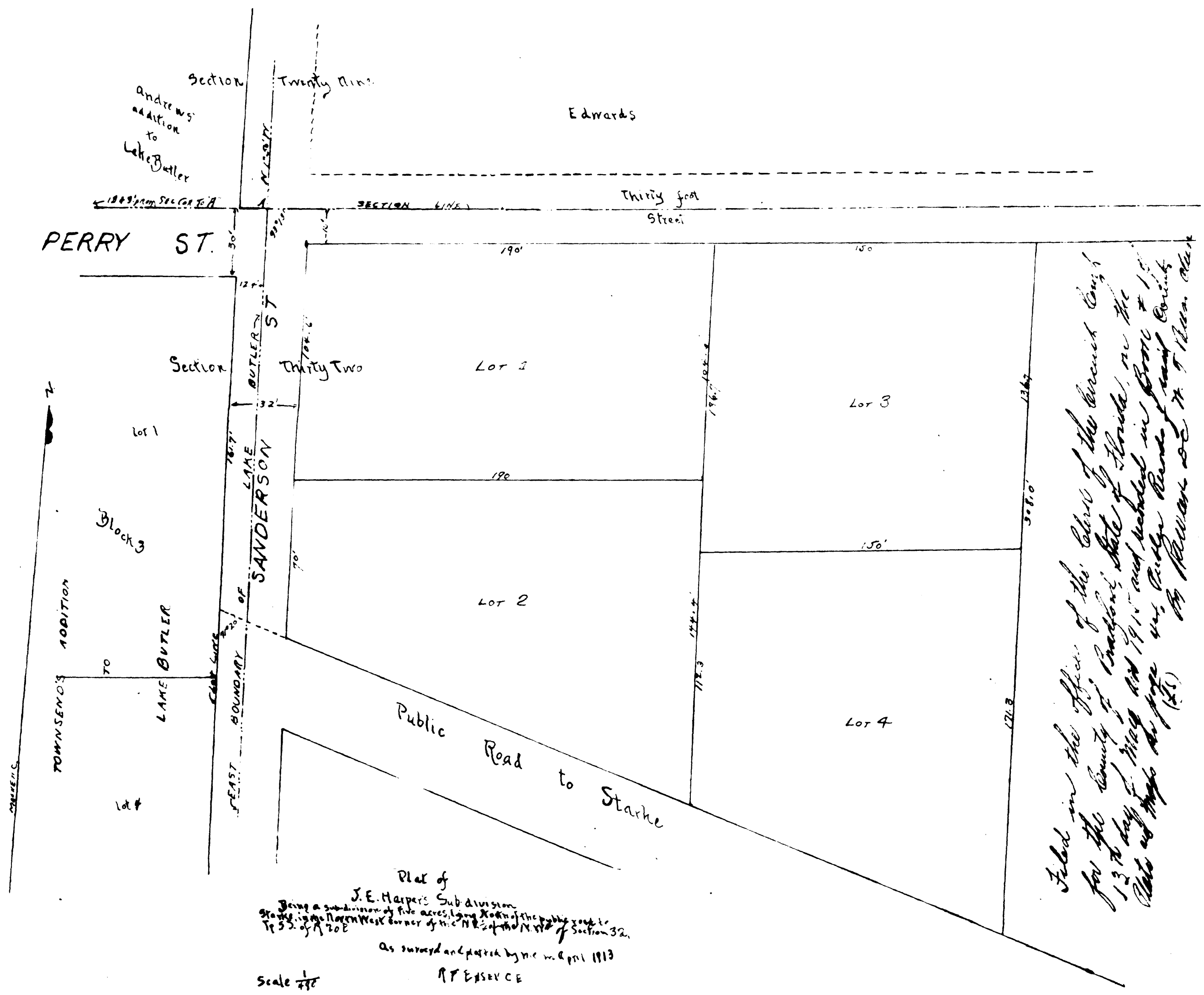


J. E. Harpers Sub-Division  
East of Lake Butler 32-5-72



Filed in the office of the Clerk of the Circuit Court  
for the County of Madison, State of Florida, on the  
13th day of May AD 1913 and recorded in Book # 10  
Plate # 175 of page 47, City and County of  
Maitland, Florida, at 11:00 AM, 1913.

Plat of  
J. E. Harpers Sub-Division  
Being a subdivision of five acres, being the N. 1/2 of the N. 1/2 of Section 32,  
T. 32 S. of R. 20 E.  
as surveyed and platted by me in April 1913  
R. T. ENSECE  
Scale 1/4" = 40'