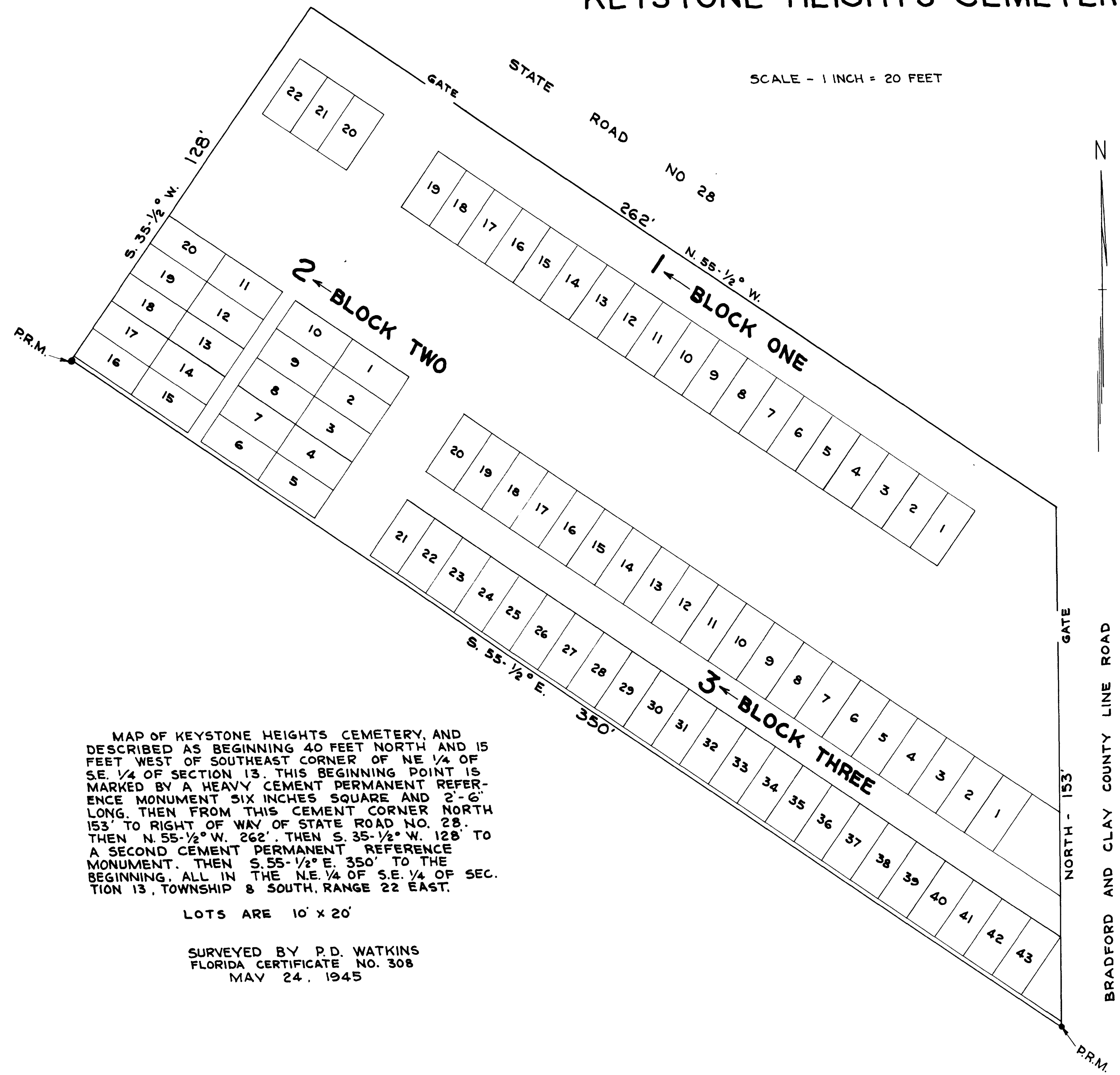


# KEYSTONE HEIGHTS CEMETERY

SCALE - 1 INCH = 20 FEET



MAP OF KEYSTONE HEIGHTS CEMETERY, AND DESCRIBED AS BEGINNING 40 FEET NORTH AND 15 FEET WEST OF SOUTHEAST CORNER OF NE 1/4 OF SE 1/4 OF SECTION 13. THIS BEGINNING POINT IS MARKED BY A HEAVY CEMENT PERMANENT REFERENCE MONUMENT SIX INCHES SQUARE AND 2'-6" LONG. THEN FROM THIS CEMENT CORNER NORTH 153' TO RIGHT OF WAY OF STATE ROAD NO. 28. THEN N. 55-1/2° W. 262'. THEN S. 35-1/2° W. 128' TO A SECOND CEMENT PERMANENT REFERENCE MONUMENT. THEN S. 55-1/2° E. 350' TO THE BEGINNING. ALL IN THE NE 1/4 OF SE 1/4 OF SECTION 13, TOWNSHIP 8 SOUTH, RANGE 22 EAST.

LOTS ARE 10' x 20'

SURVEYED BY P.D. WATKINS  
FLORIDA CERTIFICATE NO. 308  
MAY 24, 1945

We, the undersigned Trustees of the Community Church of Keystone Heights, Florida, who own the land described on plat, do hereby consent to the filing of this plat and dedicate to the public, use of streets shown on plat.

Signature of  
Two Trustees { \_\_\_\_\_  
\_\_\_\_\_

Witnesses { \_\_\_\_\_  
\_\_\_\_\_

State of Florida.  
County of Clay.

I, an officer duly qualified and acting, hereby certify that before me personally came \_\_\_\_\_ and \_\_\_\_\_ and acknowledged that they signed the above affidavit for the purpose therein expressed.

In witness whereof I have hereunto set my hand and seal this \_\_\_\_\_

Notary \_\_\_\_\_

I, a registered land surveyor, hereby certify that I have surveyed and staked the cemetery lots as shown on plat, that to the best of my knowledge and belief, this plat correctly represents the land platted and that I have set permanent reference monuments as required by law.

Registered Florida Certificate No. 308  
May 24, 1945

We, the undersigned members of the Board of County Commissioners of Bradford County, Florida, do hereby approve this plat and accept for public use the streets thereon.

Chairman \_\_\_\_\_  
\_\_\_\_\_  
\_\_\_\_\_  
\_\_\_\_\_