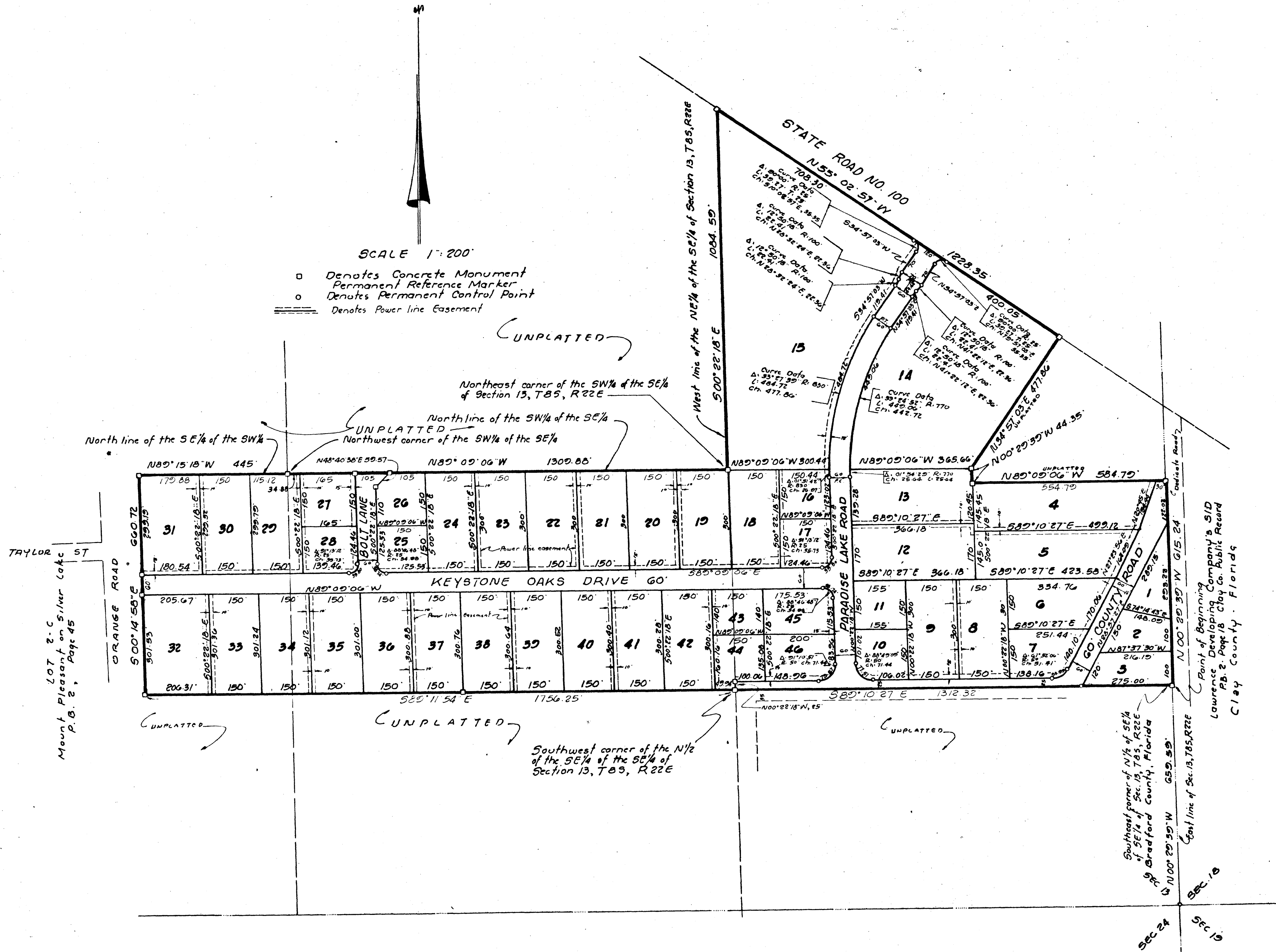


KEYSTONE OAKS

BRADFORD COUNTY, FLORIDA



SCALE 1"=200'

- Denotes Concrete Monument
- Permanent Reference Marker
- Denotes Permanent Control Point
- ==== Denotes Power line Easement

LOT 2-C
Mount Pleasant on Silver Lake
P.B. 2, Page 45

Point of Beginning
Lawrence Developing Company's S1D
P.B. 2, Page 18 Clay Co. Public Record
Clay County, Florida

Southwest corner of N1/2 of SE1/4 of SE1/4 of Sec. 13, T85, R22E
Bradford County, Florida

