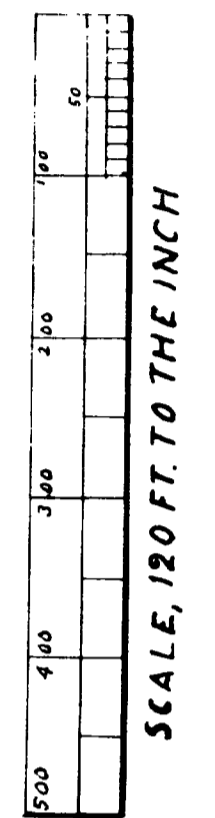
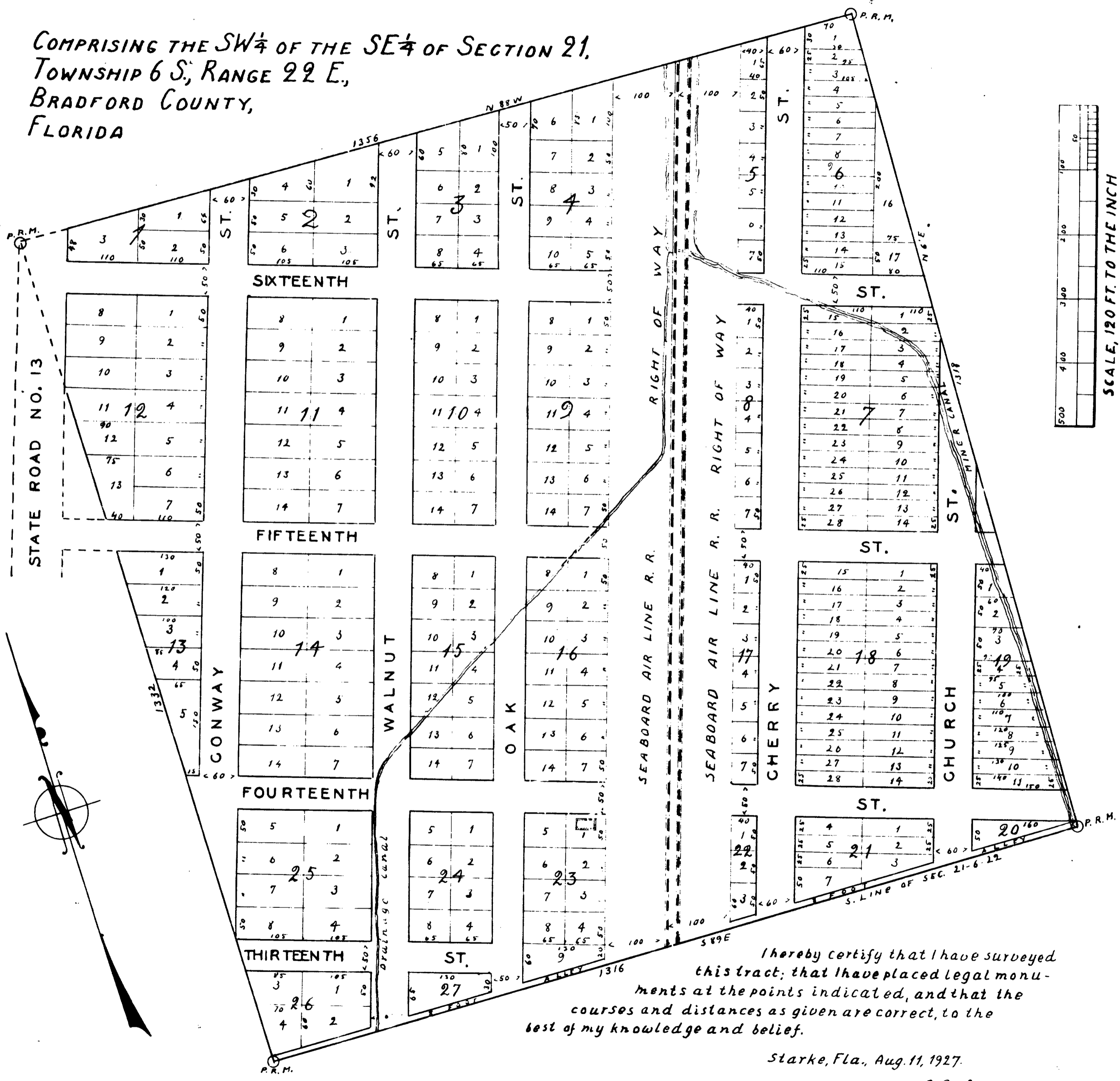


# Knight's Subdivision

COMPRISING THE SW<sup>1</sup>/<sub>4</sub> OF THE SE<sup>1</sup>/<sub>4</sub> OF SECTION 21,  
TOWNSHIP 6 S., RANGE 22 E.,  
BRADFORD COUNTY,  
FLORIDA



I hereby certify that I have surveyed  
this tract; that I have placed legal monu-  
ments at the points indicated, and that the  
courses and distances as given are correct, to the  
best of my knowledge and belief.

Starke, Fla., Aug. 11, 1927.

H. E. Lagergren

## Dedication

WE, D.E. Knight and wife, N.L. Knight, are the sole owners of Knight's Subdivision, comprising the SW<sup>1</sup>/<sub>4</sub> of the SE<sup>1</sup>/<sub>4</sub> of Section 21, Tp. 6 S., Range 22 E., Bradford County, Florida, as per annexed plat; and we do hereby dedicate to the use of the public forever the streets platted thereon.

Signed in the presence of

*D. E. Knight*  
*N. L. Knight*

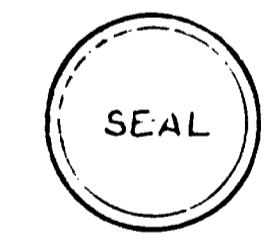
*D. E. Knight* SEAL  
*N. L. Knight* SEAL

STATE OF FLORIDA  
BRADFORD COUNTY

On this 24 day of October, 1927 personally appeared before me D. E. Knight and N. L. Knight, his wife, to me well known, and they acknowledged that they made the foregoing dedication for the purpose therein expressed.

WITNESS MY HAND and official seal at Starke, Bradford County, Florida, the day and year first above written.

My commission expires December 10<sup>th</sup> 1928  
*[Signature]* Notary Public



APPROVED:

*Louis F. Hill*  
Ch'n Co. Commrs Bradford Co.

ATTEST:

*G. W. [Signature]*  
Clerk