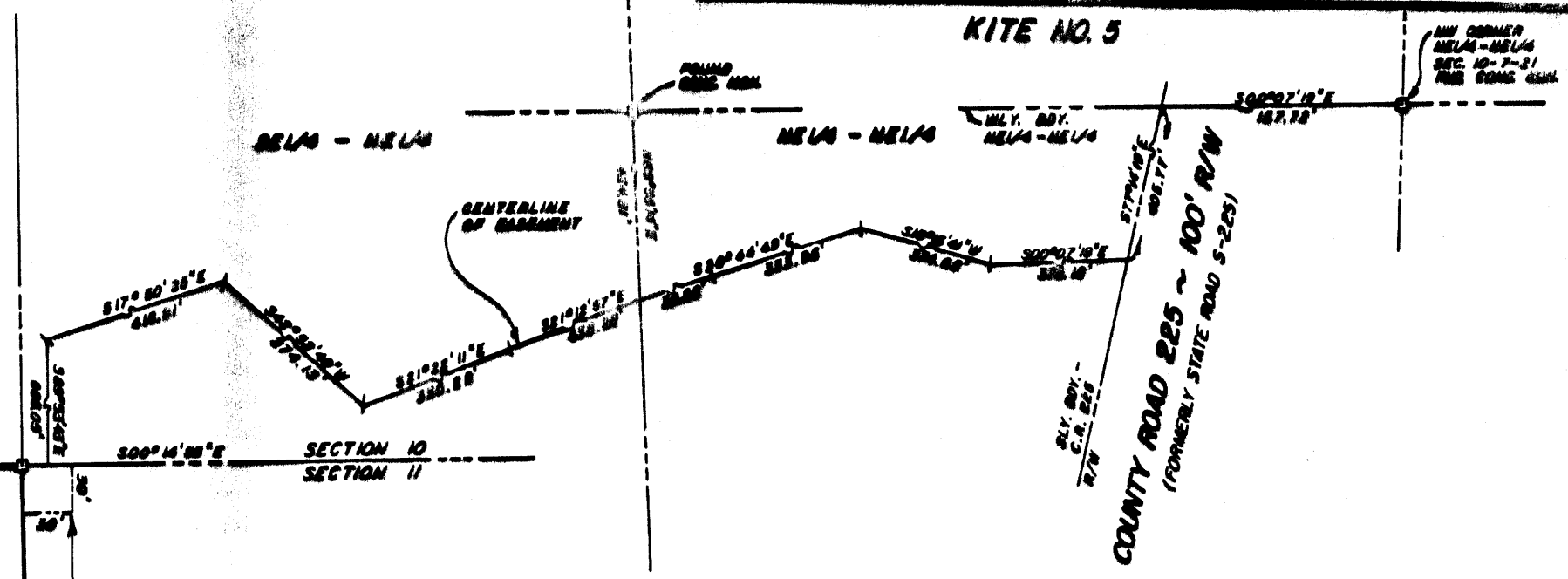
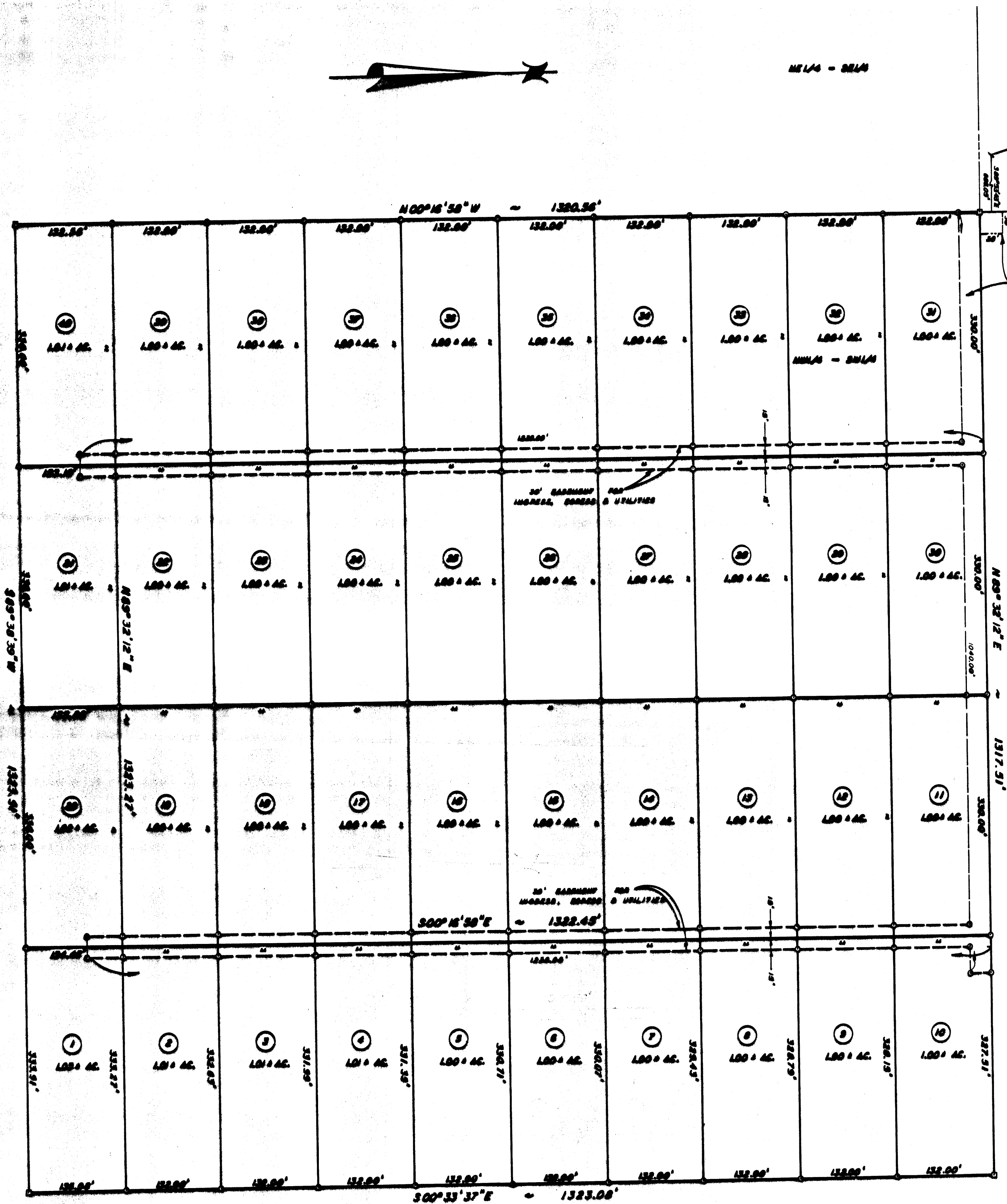


1B-825



MAP SHOWING BOUNDARY SURVEY

OF THE NW/4 OF THE SW/4 OF SECTION 11, TWP. 7 SOUTH, RS. 21 EAST, GRADFORD COUNTY, FLORIDA.

FOR: L. J. KITE

SCALE: 1" = 100'

NOV 12, 1987

LEGEND

Set concrete monument —○— unless otherwise shown
Set iron rod —●—

NOTES

Bearings are assumed.
See separate sheets for Descriptions of Parcels 1 through 40.

SURVEYOR'S CERTIFICATION

I hereby certify that this map represents a survey made under my supervision and that said survey meets or exceeds the minimum technical standards pursuant to Section 472.027, Florida Statutes.

By Patrick B. Welch
PATRICK B. WELCH, PLS
FLORIDA CERTIFICATE NO. 2714

PATRICK B. WELCH & ASSOCIATES, INC.
LAND SURVEYING, PLANNING & DRAFTING SERVICES
P.O. BOX 829 870 WEST MACMAHON STREET
STARKE, FLORIDA 32091 (904) 264-8292