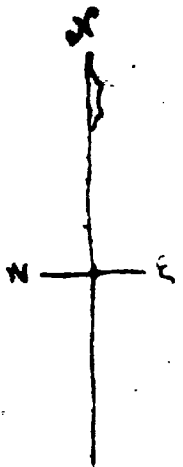
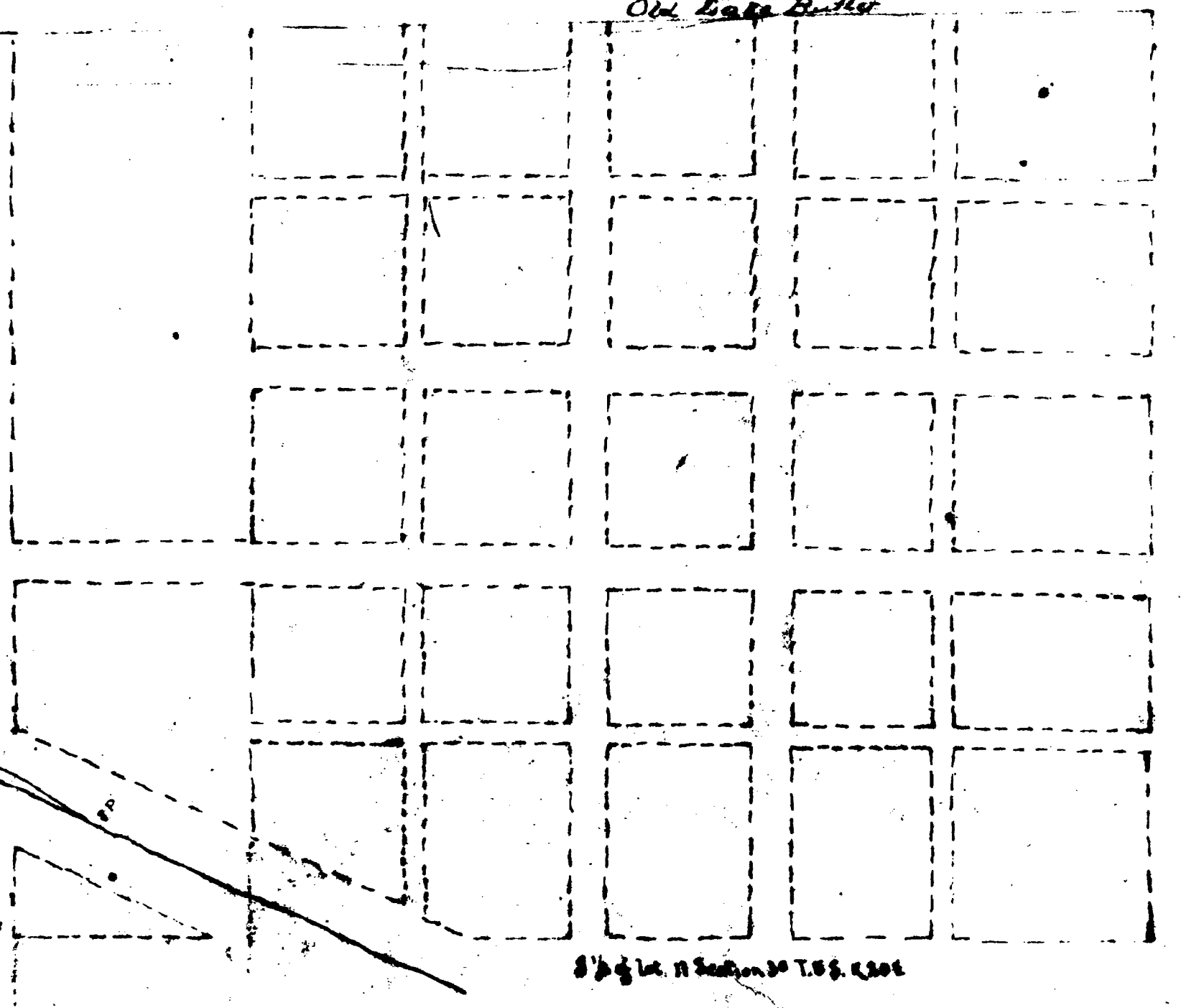
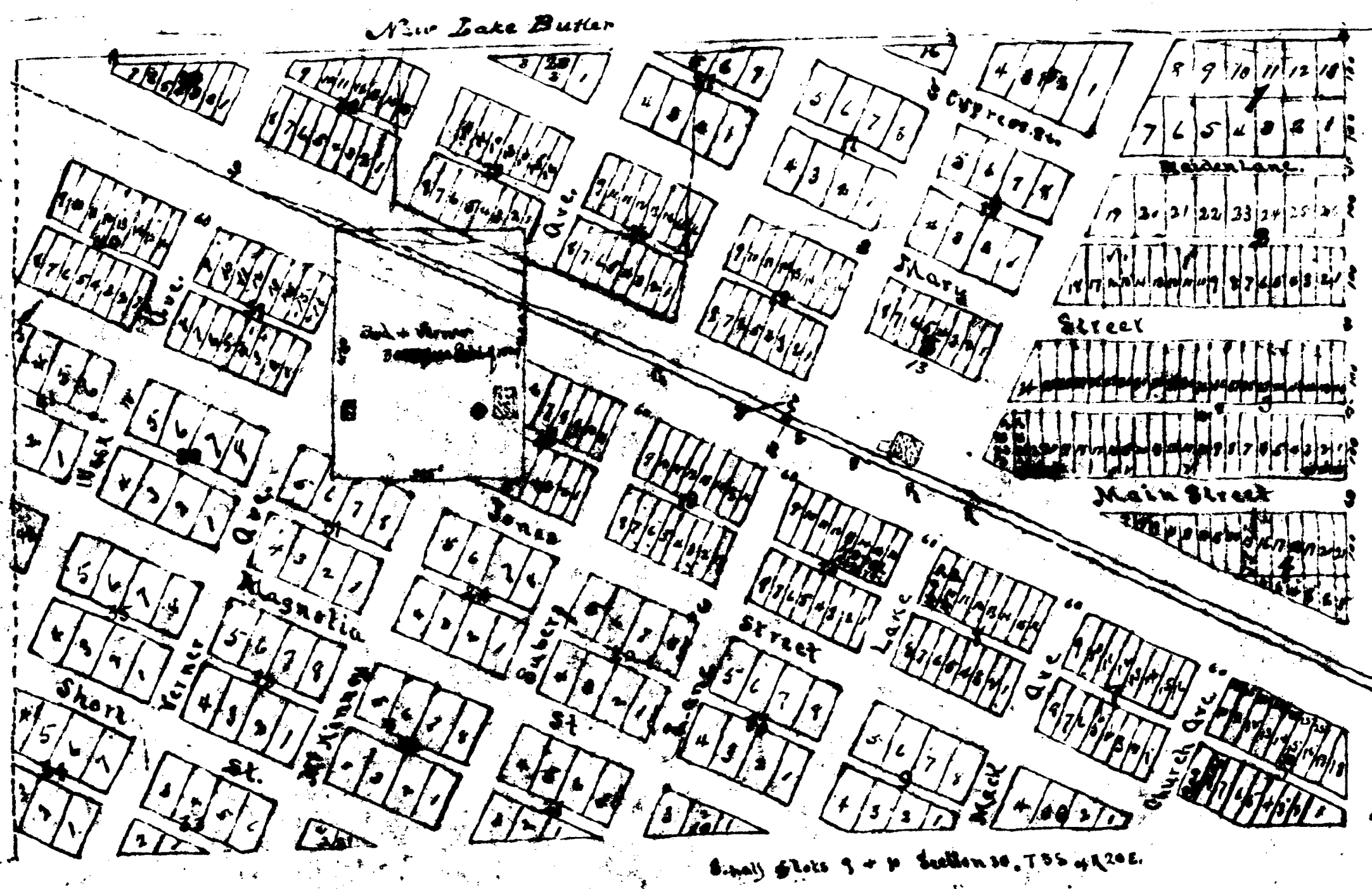


MAP  
1057  
LAKE BUTLER  
Florida



Scale 2 in. = 1/2 inch



Small lots 9 + 10 Section 30, T. 55 N., R. 20 E.

Small lots 11 Section 30, T. 55 N., R. 20 E.

Filed with Recorded this 10th day of December A.D. 1907  
in Book No. 1 of Maps, Pub. Records of  
Bradford County, (S.S.) By W.E. Warrington & Co.  
A.T. Veeke clerk