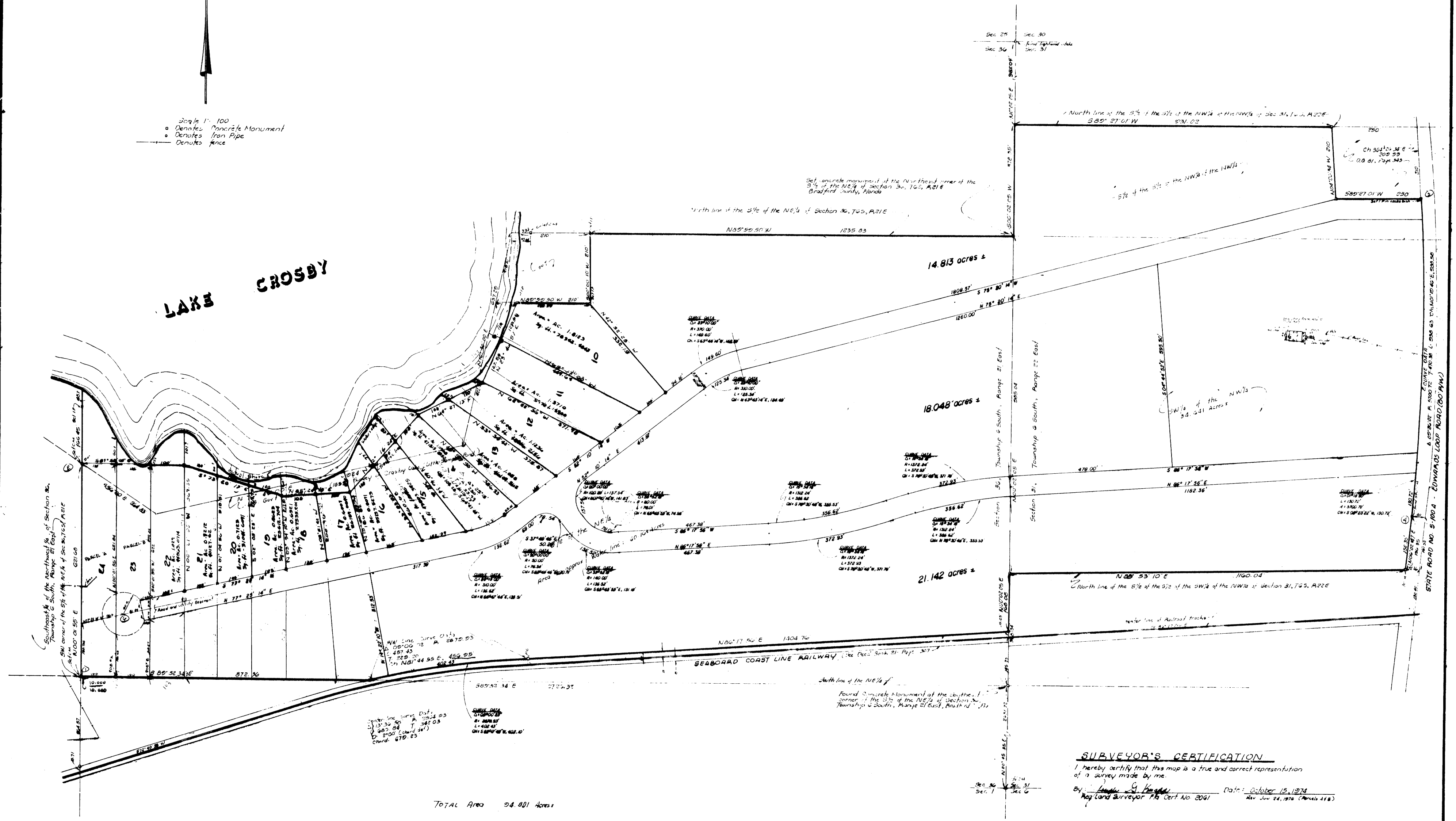
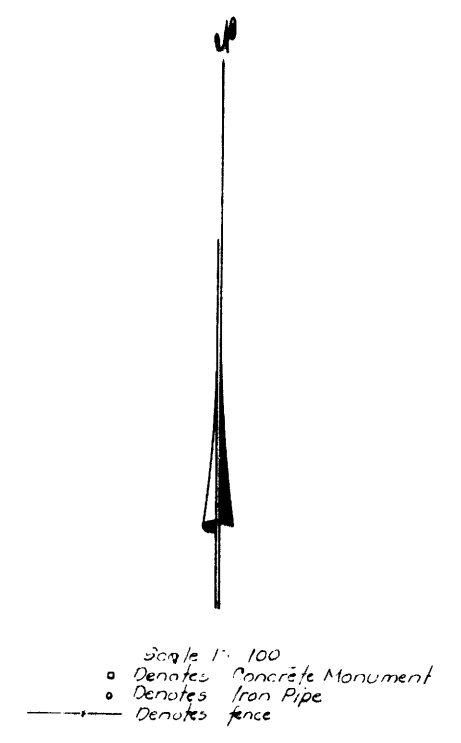


MCRAE SUB ON CROSBY LAKE
UN-REC

SURVEY OF LANDS IN SECTION 31, TOWNSHIP 6 SOUTH, RANGE 22 EAST
AND IN SECTION 36, TOWNSHIP 6 SOUTH, RANGE 21 EAST
BRADFORD COUNTY, FLORIDA



TOTAL AREA 54.801 Acres

SURVEYOR'S CERTIFICATION
I hereby certify that this map is a true and correct representation of a survey made by me.
By: Joseph G. Knapp Date: October 13, 1974
Surveyor No. 2061 Rev. July 24, 1974 (Florida 118)

Bearings shown are projected from D.O.T. Map Maps for S.M. 21004. (True bearings)
Lake Crosby water line as per aerial photographs and cut field located.

JOSEPH G. KNAPP
Land Surveying and Drafting Service
P.O. Box 306 Maitland, Florida