

NAT WILLIAMS-SUB-DIVISION

Located in South West Corner of N.W. 1/4 of S.W. 1/4 Section 22- T6S-R22E in new City Limits of Starke, Bradford County, Florida and described as follows. Beginning at the South West Corner of N.W. 1/4 of S.W. 1/4 Section 22 T6S-R22E run N89° 40' E along South line of N.W. 1/4 of S.W. 1/4 Sec. 22 T6S-R22E a distance of 467 feet to East side of a 50' foot Street, thence N0° 30' W along said East side of said 50' foot Street 737 feet to North Side of a 50' Graded road, thence S89° 40' W along said North Side of 50' graded Road 207 feet, thence S86° 45' W along said North Side of 50' Graded road 100 feet, thence S77° 45' W along said North Side of 50' Graded Road 102.5 feet, thence S62° 45' W-68 feet to a point of intersection of West line of Section 22-T6S-R22E, thence S0° 30' E-679 feet along said West line of Section 22 T6S-R22E to point of beginning and lying in S.W. Corner of N.W. 1/4 of S.W. 1/4, Section 22- T6S-R22E, all in City of Starke, Bradford County, Florida.

This is to certify that the undersigned are the lawful owners of the land described in the caption there of, that they caused the same to be surveyed and sub-divided and that this plat made in accordance with said survey is hereby adopted as the true and correct plat of said lands and all parts of roads and streets on said plat are hereby dedicated to the City of Starke, Bradford County, Florida and its successors.

In Witness whereof these presents are signed this 6th day of July 1954.

Signed and sealed in the presence of:

Esther S. Carter Nat Williams Seal
Kelly Louise Williams Seal

State of Florida: County of Bradford.

I hereby certify that on this day personally appeared before me an officer duly authorized to administer oaths and take acknowledgements, that Nat Williams and Louise Williams his wife, to me well known and known to be the persons described in and who executed the foregoing dedication and who severally acknowledged before me that they executed the same freely and voluntarily for the purposes therein expressed.

Witness my signature and official seal at Starke, Bradford County, Florida this 6th day of July 1954.

Kelly Notary Public, State of Florida.
My Commission expires December 2, 1956

Approved for Record

This is to certify that this plat has been examined and is hereby accepted and approved by the City Council of the City of Starke, Bradford County, Florida.

Signed this day of 1954. City Council of Starke, Florida.

Attest: Secretary Carl Jones Chairman James A. Lewis

Clerks Certificate

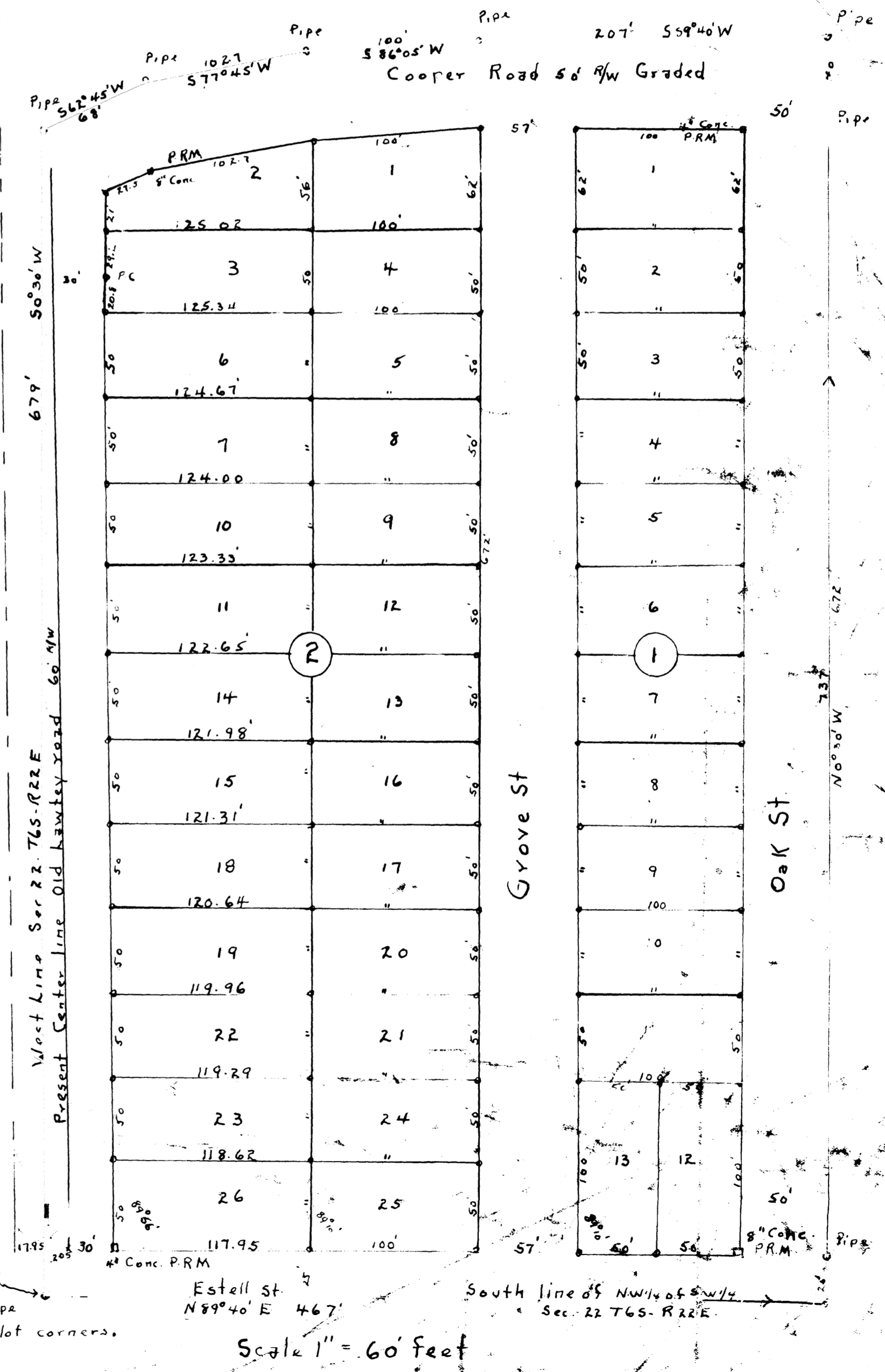
I hereby certify that this plat has been examined and that it complies in form with Chapter 10275 Laws of Florida 1925 and is filed for record and recorded in Plat Book 2 Page 67 of the Public Record of Bradford County Florida this day of 1954.

Clerk _____
Deputy Clerk _____

I hereby certify that the above plat is a true representation of the lands surveyed and platted and described above and that Permanent Reference Monuments have been placed according to the laws of Florida.

Witness my hand this July 2- 1954

Harry A. Anthony
Bradford County Surveyor, Registered Land Surveyor No 776
State of Florida



S.W. Cor. of N.W. 1/4 of S.W. 1/4
Sec 22 T6S-R22E

Note: Irons in place on all lot corners.

Estell St.
N89° 40' E 467'

South line of N.W. 1/4 of S.W. 1/4
Sec. 22 T6S-R22E

Scale 1" = 60 feet