

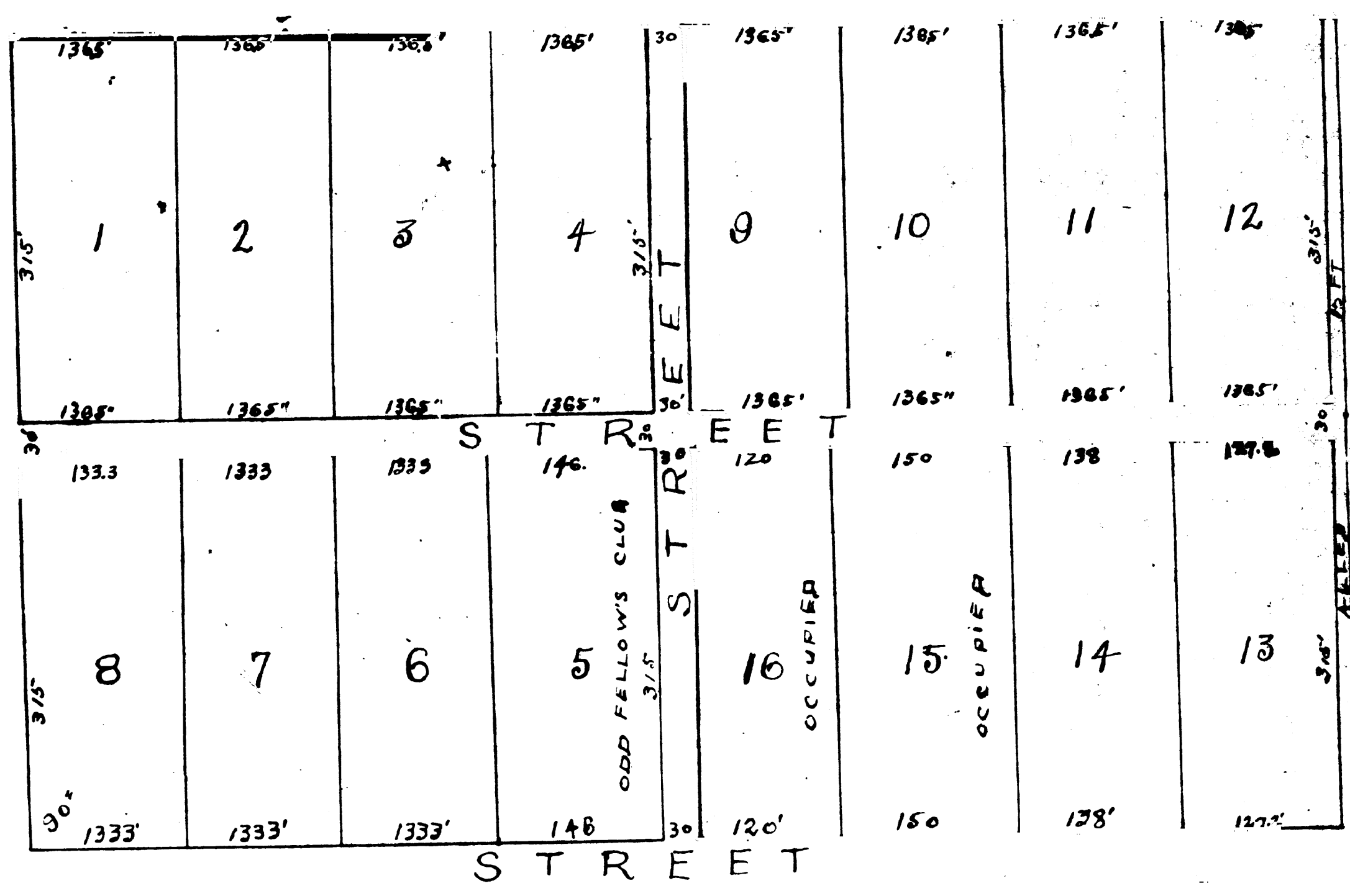
OTT'S-SUB-DIVISION OF PARTS OF SECTIONS-23-24-25-26-T5S-R-22-E. IN THE TOWN OF LAWTEY, FLA.

AS SURVEYED BY THE SOUTHERN ENGINEERING CO OF JAX FLA.
OCTOBER 13th 1910.

*Filed & recorded in the office
of the Clerk of the Circuit Court, for Brad-
ford County, State of Florida on this
20th Oct 1910.*

Public Records of said County.

*W. J. Weems
By W. J. Rogers
S. E.*



Scale 1" = 100'
0 50 100 150 200 300

Drawn by W. J. Rogers.
Traced by W. J. Rogers.
Checked by H. M. Murray
Approved by W. J. Rogers
S. E.

PLAN NO.
DRAWER NO.