

SARATOGA HEIGHTS — UNIT TWO

STARKE, BRADFORD COUNTY, FLORIDA

BOOK 2 PAGE 70

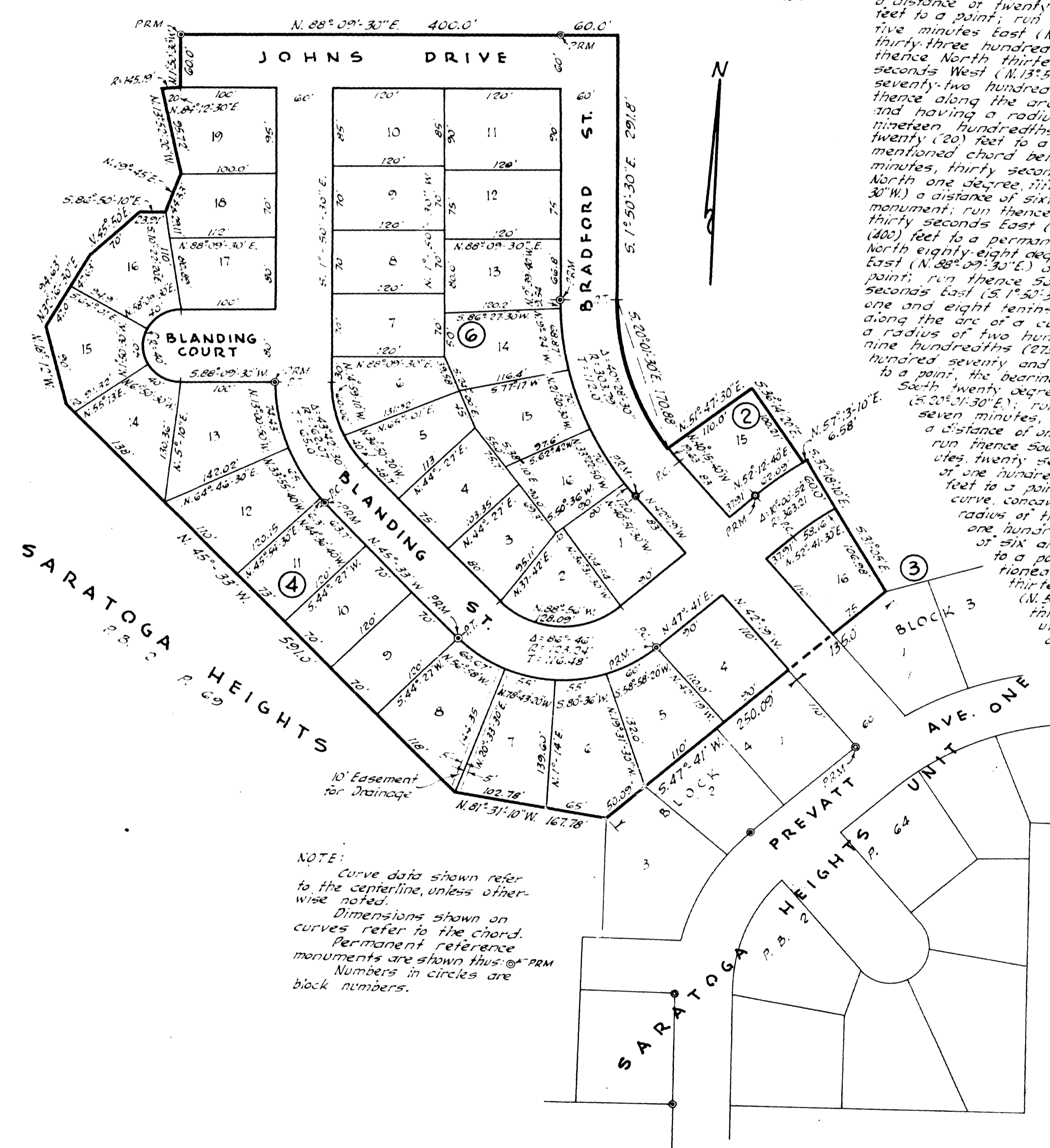
A SUBDIVISION OF A PORTION OF TRACT "A", SARATOGA HEIGHTS, ACCORDING TO PLAT OF SAME
RECORDED IN PLAT BOOK 2 PAGE 69 OF THE PUBLIC RECORDS OF BRADFORD COUNTY, FLORIDA
MORE PARTICULARLY DESCRIBED BELOW

CAPTION

For point of reference, commence at a permanent reference monument set at the extreme Easterly corner of Lot 1, Block 4, Saratoga Heights, Unit One, according to plat recorded in public records of Bradford County, Florida in Plat Book 2, Page 64, and run thence North forty-two degrees, nineteen minutes West (N. 42° 19' W.) along the Northerly boundary of said Lot 1, a distance of one hundred ten (110) feet to the extreme Northerly corner of said Lot 1 for point of beginning.

run along the line separating Block 4, Saratoga Heights Unit One, from Tract "A" aforementioned, South forty-seven degrees, forty-one minutes West (S. 47° 41' W.) a distance of two hundred fifty and nine hundredths (250.09) feet to the Northwesterly corner of Lot 3 in said Block 4; run thence North eighty-one degrees, thirty-one minutes ten seconds West (N. 81° 31' 10" W.) a distance of one hundred sixty-seven and seventy-eight hundredths (167.78) feet to a point; run thence North forty-five degrees, thirty-three minutes West (N. 45° 33' W.) a distance of five hundred

and ninety-one (591) feet to a point; run thence North eighteen degrees, twelve minutes West (N. 18° 12' W.) a distance of ninety (90) feet to a point; run thence North thirty-two degrees, sixteen minutes, thirty seconds East (N. 32° 16' 30" E.) a distance of ninety-four and sixty-three hundredths (94.63) feet to a point; run thence North forty-five degrees, fifty minutes East (N. 45° 50' E.) a distance of seventy (70) feet to a point; run thence South eighty-six degrees, fifty minutes, ten seconds East (S. 86° 50' 10" E.) a distance of twenty-three and ninety-one hundredths (23.91) feet to a point; run thence North nineteen degrees, forty-five minutes East (N. 19° 45' E.) a distance of forty-four and thirty-three hundredths (44.33) feet to a point; run thence North thirteen degrees, fifty-two minutes, twenty seconds West (N. 13° 52' 20" W.) a distance of ninety-five and seventy-two hundredths (95.72) feet to a point; run thence along the arc of a curve, concave to the South and having a radius of one hundred forty-five and nineteen hundredths (145.19) feet, a chord distance of twenty (20) feet to a point, the bearing of the aforementioned chord being North eighty-four degrees, twelve minutes, thirty seconds East (N. 84° 12' 30" E.); run thence North one degree, fifty minutes, thirty seconds West (N. 1° 50' 30" W.) a distance of sixty (60) feet to a permanent reference monument; run thence North eighty-eight degrees, nine minutes, thirty seconds East (N. 88° 09' 30" E.) a distance of four hundred (400) feet to a permanent reference monument, and continue North eighty-eight degrees, nine minutes, thirty seconds East (N. 88° 09' 30" E.) a distance of sixty (60) feet to a point; run thence South one degree, fifty minutes, thirty seconds East (S. 1° 50' 30" E.) a distance of two hundred ninety-one and eight tenths (291.8) feet to a point; run thence along the arc of a curve, concave to the East and having a radius of two hundred seventy-three and seventy-nine hundredths (273.79) feet a chord distance of one hundred seventy and eighty-eight hundredths (170.88) feet to a point, the bearing of the aforementioned chord being South twenty degrees, one minute, thirty seconds East (S. 20° 1' 30" E.); run thence North fifty-one degrees, thirty-seven minutes, thirty seconds East (N. 51° 37' 30" E.) a distance of one hundred ten (110) feet to a point; run thence South thirty-six degrees, fourteen minutes, twenty seconds East (S. 36° 14' 20" E.) a distance of one hundred and twenty-one hundredths (100.01) feet to a point; run thence along the arc of a curve, concave to the Southeast and having a radius of three hundred ninety-three and twenty-one hundredths (393.21) feet a chord distance of six and fifty-eight hundredths (6.58) feet to a point, the bearing of the aforementioned chord being North fifty-seven degrees, thirteen minutes, ten seconds East (N. 57° 13' 10" E.); run thence South thirty-two degrees, eighteen minutes, ten seconds East (S. 32° 18' 10" E.) a distance of sixty (60) feet to a point; run thence South thirty-one degrees, five minutes East (S. 31° 5' E.) a distance of one hundred six and ninety-eight hundredths (106.98) feet to a point in the Northerly boundary of Lot 1, Block 3, Saratoga Heights Unit One aforementioned; run thence South forty-seven degrees, forty-one minutes West (S. 47° 41' W.) along the Northerly boundary of said Lot 1, a distance of one hundred thirty-five (135) feet to the point of beginning.



NOTE:
Curve data shown refer to the centerline, unless otherwise noted.
Dimensions shown on curves refer to the chord.
Permanent reference monuments are shown thus: PRM
Numbers in circles are block numbers.

ADOPTION AND DEDICATION
This is to certify that the undersigned is the lawful owner of the land described in the caption hereof, that it has caused the same to be surveyed and subdivided and that this plat made in accordance with said survey is hereby adopted as the true and correct plat of said lands and all streets, drives and courts shown upon said plat are hereby irrevocably and without reservation dedicated to City of Starke, Bradford County, Florida, and its successors.
In witness whereof these presents are signed this 12th day of April A.D. 1955.

Signed and Sealed in the presence of:
W. C. Demetree
W. C. Demetree
BREVARD CONTRACTORS INC.
Charles Demetree
Its Vice-President
W. C. Demetree
Its Secretary

STATE OF FLORIDA
COUNTY OF DUVAL
I hereby certify that on this day personally appeared before me, an officer duly authorized to administer oaths, W. C. DEMETREE, respectively Vice-President and Secretary of BREVARD CONTRACTORS INC., a Florida corporation, to me known to be the persons described in and who executed the foregoing Dedication and severally acknowledged the execution thereof to be their free act and deed as such that they affixed thereto the official seal of said corporation. Witness my signature and official seal at Jacksonville, Duval County, Florida this 12th day of April, A.D. 1955.
Kitty Crowell
Notary Public State of Florida at Large
My Commission expires Nov. 4, 1956

APPROVED FOR RECORD
This is to certify that this plat has been examined and is hereby accepted and approved by the City Council of the City of Starke, Bradford County, Florida.
Signed this 13th day of April, A.D. 1955.
attest: *Caefolus*
Secretary
by: *James A. Lewis*
Chairman
CITY COUNCIL OF STARKE, FLORIDA

CLERK'S CERTIFICATE
I hereby certify that this plat has been examined and that it complies in form with Chapter 10275, Laws of Florida of 1925, and is filed for record and recorded in Plat Book 2, Page 70 of the public records of Bradford County, Florida, this 14th day of April, A.D. 1955.
W. C. Demetree
Clerk
Deputy Clerk

SURVEYORS CERTIFICATE
This is to certify that the above plat is a correct representation of the lands surveyed and platted and described above, that permanent reference monuments have been placed according to the laws of Florida.
Signed this 12th day of April, A.D. 1955.
Robert M. Cugas
Reg. Land Surveyor No. 25