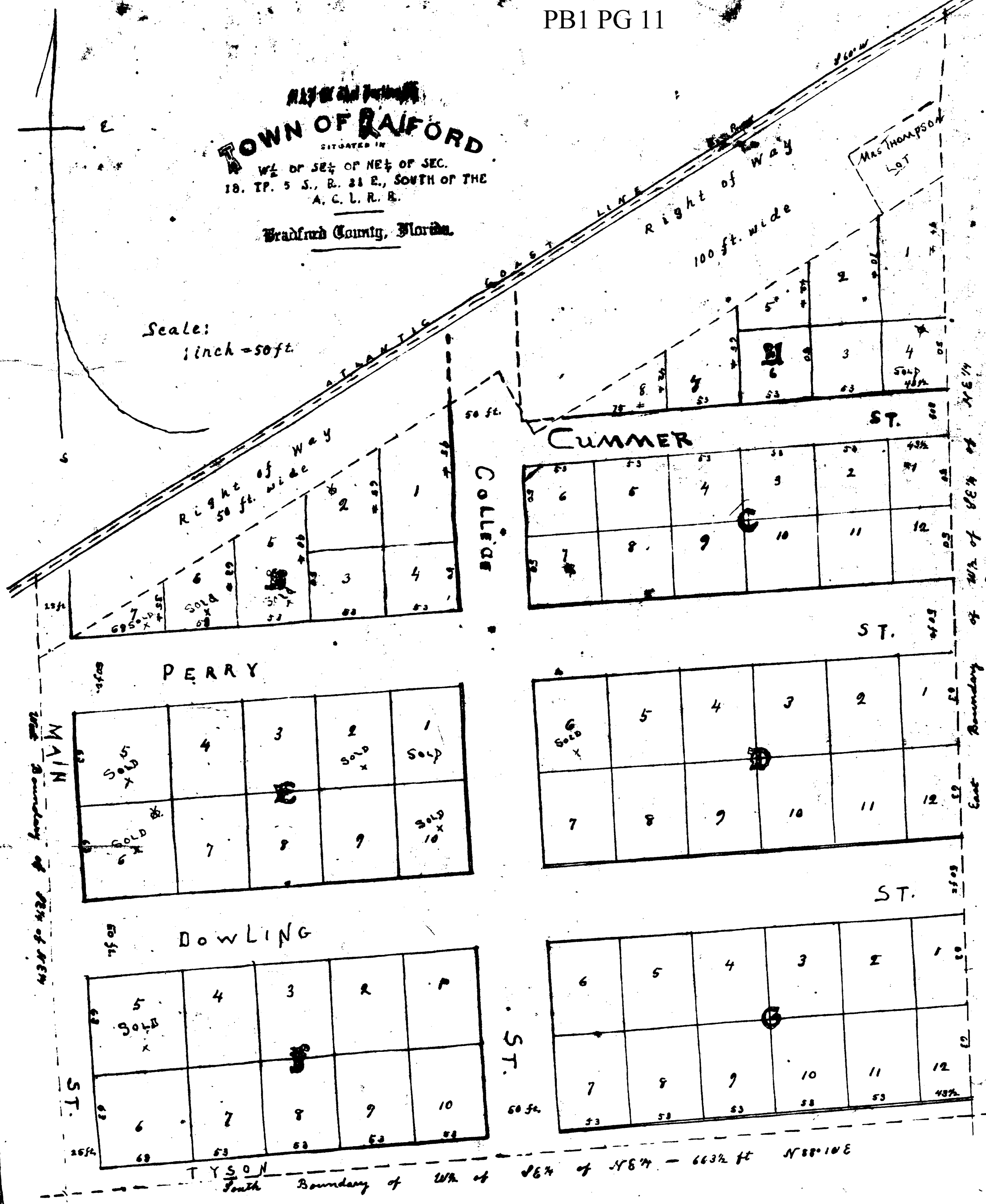


TOWN OF RAIFORD
SITUATED IN
W $\frac{1}{2}$ OF SE $\frac{1}{4}$ OF NE $\frac{1}{4}$ OF SEC.
18. TP. 5 S., R. 21 E., SOUTH OF THE
A. C. L. R. R.
Bradford County, Florida.

Scale:
1 inch = 50 ft.



Filed to the office of the Clerk of
the Circuit Court for the County of
Bradford, State of Florida on the
7th day of Oct A. D.
1907 and recorded in Book
107 of Maps on page 20
Public Records of said County.
H. E. Wainwright
Deputy Clerk

Boundaries Surveyed and Plat made September, 1909.
by H. E. Laguzon