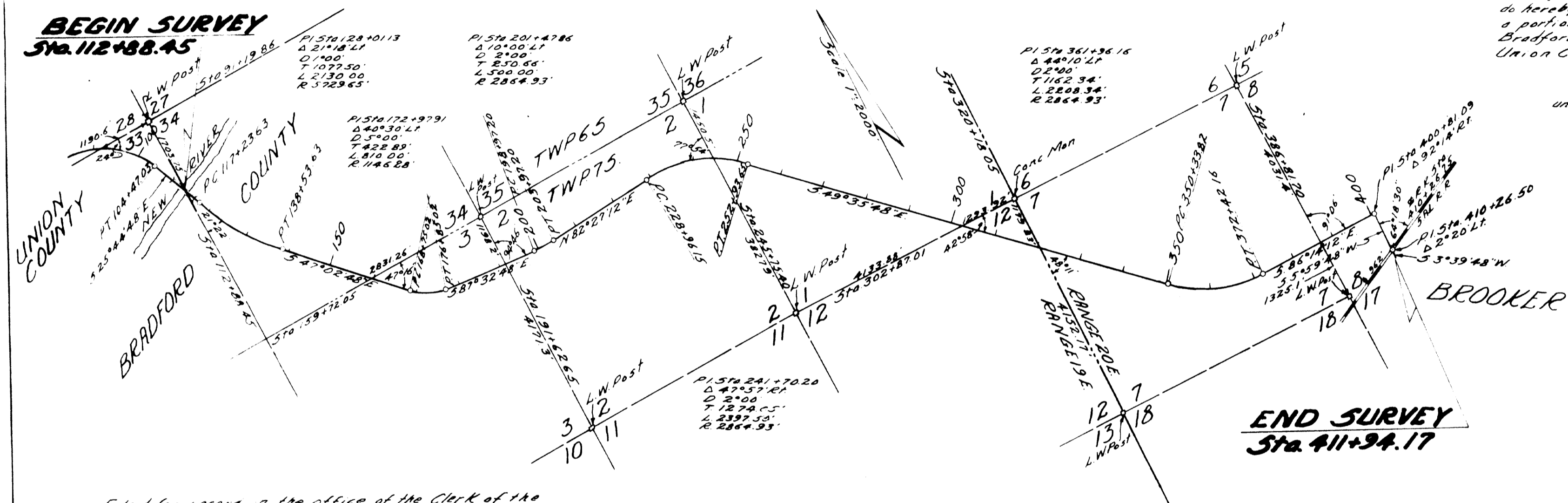


**BEGIN SURVEY**  
Sta. 112+88.45



I, F. E. Bayless, Chairman of the State Road Department of the State of Florida do hereby certify that this map is the official map of location and Survey of a portion of Section 2804 designated as a part of State Road 18 in Bradford County, Florida. Said portion of Section 2804 extending from Union County line to State Road 235 in Brooker.

Prepared and adopted by the State Road Department under provisions of Section 341.47 Florida Statutes of 1941

*F. E. Bayless*  
Chairman State Road Department

ATTEST *J. W. Clune*  
Secretary

APPROVED *Paul J. ...*  
State Highway Engineer

DATE NOVEMBER 26th. 1947

Filed for record in the office of the Clerk of the Circuit Court for the County of Bradford, State of Florida on the ... day of ... A.D. 1947.



Clerk of the Circuit Court  
Bradford County, Florida

NOTE  
Existing road follows approximately along Survey line

Filed in the office of the Clerk of Circuit Court, Bradford County, Florida, on 5th day of December, A.D. 1947 and recorded in Book 2 of Plat Books on page 53  
PUBLIC RECORDS OF SAID COUNTY  
A. J. THOMAS, Clerk Circuit Court. By *Lucille Connors*

Note: Right of Way map showing required widths of Right of Way to be filed at an early date

Section 2804 Rd 18 Bradford Co