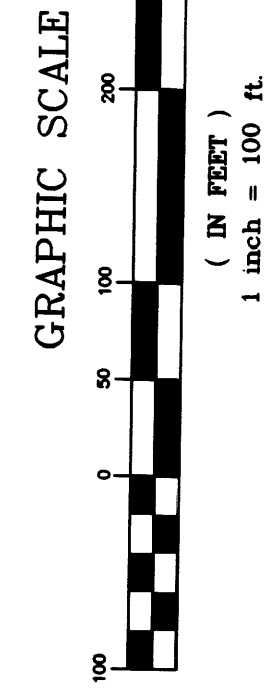
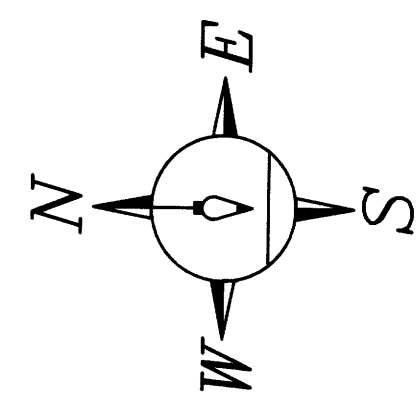




# "Bragg Branch Crossing"

A SUBDIVISION LYING PARTIALLY IN SECTION 8, AND PARTIALLY IN SECTION 9, TOWNSHIP 7 SOUTH, RANGE 20 EAST, BRADFORD COUNTY, FLORIDA

CURVE	LENGTH	CURVE TABLE	CH. BEARING	CH. DIST.
C1	47.95	1398.40	S85°54'00"E	36.02
C2	40.23	25.00	N88°54'00"E	36.02
C3	123.06	270.00	N00°19'02"W	121.89
C4	38.53	270.00	N17°27'43"W	38.50
C5	77.96	495.00	S16°03'51"E	77.44
C6	18.36	495.00	S05°30'33"E	71.57
C7	18.36	25.00	S85°54'00"E	36.02
C8	18.48	25.00	N88°54'00"E	36.02
C9	63.90	50.00	N83°32'28"E	59.64
C10	63.90	50.00	S03°21'46"E	59.46
C11	65.74	50.00	S90°41'11"W	61.10
C12	41.72	250.00	S02°51'13"W	41.66
C13	18.69	250.00	N88°54'00"E	37.77
C14	18.69	25.00	N88°54'00"E	37.77
C15	40.23	25.00	N27°02'16"W	26.72
C16	32.97	15.00	N27°02'16"W	26.72
C17	18.69	25.00	N68°54'00"W	18.26
C18	37.37	250.00	N68°54'00"W	36.51
C19	111.90	230.00	S21°59'14"W	110.80
C20	64.82	50.00	S23°51'57"E	60.39
C21	64.82	50.00	N87°47'17"W	60.39
C22	64.82	50.00	N87°47'17"W	60.39
C23	84.71	2286.24	N87°50'53"E	84.76
C24	18.69	25.00	S68°55'00"E	18.26
C25	133.79	2286.24	N85°06'33"E	133.76
C26	59.89	105.00	N73°38'08"W	59.17
C27	59.89	105.00	N73°38'08"W	59.17
C28	69.58	230.00	N80°00'00"E	27.16
C29	176.32	2286.24	N73°38'08"W	176.37
C30	65.48	230.00	S86°57'41"W	65.26
C31	181.14	760.00	N76°58'31"W	160.84
C32	38.15	25.00	N85°22'38"E	34.56
C33	38.15	25.00	N85°22'38"E	34.56
C34	130.96	2286.24	N88°17'04"E	130.54
C35	130.96	2286.24	N88°17'04"E	130.54
C36	15.69	50.00	N87°20'21"W	15.69
C37	64.89	2286.24	N83°09'21"W	60.43
C38	60.00	50.00	N29°17'33"W	60.43
C39	48.84	50.00	N37°04'09"E	46.92
C40	18.04	25.00	S43°01'09"W	18.21
C41	18.04	25.00	S43°01'09"W	18.21
C42	18.63	25.00	N85°54'00"E	36.02
C43	86.97	50.00	N85°54'00"E	36.02
C44	20.58	50.00	N03°11'34"E	20.43
C45	60.35	50.00	N49°33'28"E	56.75
C46	63.87	50.00	S59°16'25"E	59.61
C47	126.03	250.00	N43°59'15"W	118.39
C48	126.03	250.00	N43°59'15"W	118.39
C49	98.43	700.00	N74°42'39"W	124.83
C50	48.40	170.00	N82°52'41"W	48.23
C51	219.50	171.13	S41°55'47"W	204.76
C52	21.38	341.00	S00°03'52"W	21.37
C53	39.09	25.00	S44°05'50"E	35.23
C54	63.07	103.28	N88°51'39"W	72.80
C55	63.07	103.28	N88°51'39"W	72.80
C56	25.75	530.00	N15°45'15"E	53.06
C57	38.71	530.00	N15°45'15"E	53.06
C58	236.59	180.00	N76°28'53"W	38.70
C59	63.49	130.00	N14°56'25"E	62.86
C60	102.64	130.00	N51°33'12"E	100.00
C61	102.64	130.00	N51°33'12"E	100.00
C62	27.37	103.54	N81°53'54"E	34.20
C63	27.37	103.54	N81°53'54"E	34.20
C64	87.14	1033.54	S88°45'17"E	87.37
C65	50.23	1399.40	S88°45'17"E	87.37
C66	42.12	25.00	S47°22'51"W	50.23
C67	78.45	330.00	N05°55'43"E	78.27
C68	40.77	25.00	S33°24'27"E	36.06
C69	40.77	25.00	S33°24'27"E	36.06
C70	138.40	1389.40	S81°50'10"E	111.45
C71	39.60	25.00	S44°45'17"E	35.99
C72	89.07	970.00	N88°15'30"W	88.04
C73	38.99	976.90	N82°28'19"W	38.99
C74	57.77	470.00	N77°50'24"W	57.13
C75	157.71	200.00	N36°42'15"W	146.60
C76	107.55	970.00	N45°07'13"E	97.55
C77	107.55	970.00	N45°07'13"E	97.55
C78	27.39	28.78	S27°44'28"E	26.79
C79	27.39	28.78	S27°44'28"E	26.79
C80	140.28	349.43	S11°46'27"E	130.34
C81	246.10	730.00	N75°13'30"W	244.94
C82	56.94	200.00	S88°57'41"W	56.74
C83	56.94	200.00	S88°57'41"W	56.74
C84	133.28	200.00	S38°13'54"W	260.17
C85	60.82	150.00	N85°36'24"W	131.93
C86	197.15	150.00	N36°42'10"W	183.79
C87	154.18	100.00	N45°07'13"E	138.38
C88	110.88	100.00	S87°21'57"E	110.82
C89	179.54	300.00	N69°24'20"W	176.87
C90	181.54	375.00	S10°59'43"E	137.36
C91	181.54	375.00	S10°59'43"E	137.36
C92	160.81	2286.24	N77°22'42"E	161.51
C93	65.34	75.00	N85°02'37"E	63.29



SURVEYOR Patrick B. Welch, PSM  
Florida Certificate No. 2714  
Business Office  
870 W. MacMahon Street  
Stark, Florida 32091  
Phone (904) 964-8292

LANDS OF T. J. & NELL MANN  
00650-0-00100  
56.46 AC.

LANDS OF DEBRA A BELINSKE  
00350-0-00101  
2.00 AC.

- Set 3" x 3" permanent reference monument (#2714)
- Found 3" x 3" concrete monument (NO ID)
- Found 1/2" iron rod (LB 4012)
- Found 1/2" iron pipe (NO ID)
- Concrete power line and pole
- Right of way = R/W
- Dashed Lines shown hereon denote building setback lines
- Grey Lines shown hereon denote 10' utilities easements to Clay Electric



LOT NUMBER	1	2	3	4	5	6	7	8	9	10	11	12	13	14	15	16	17	18	19	20	21	22	23	24	25	26	27	28	
MIN. FINISH FLOOR EL.	143.0	142.0	142.5	141.5	140.0	137.0	136.0	135.0	135.0	135.0	135.0	135.0	135.0	135.0	135.0	135.0	135.0	135.0	135.0	135.0	135.0	135.0	135.0	135.0	135.0	135.0	135.0	135.0	138.0
LOT NUMBER	29	30	31	32	33	34	35	36	37	38	39	40	41	42	43	44	45	46	47	48	49	50	51	52	53	54	55		
MIN. FINISH FLOOR EL.	136.5	134.0	133.0	133.0	133.0	133.0	133.0	133.0	133.0	133.0	133.0	133.0	133.0	133.0	133.0	133.0	133.0	133.0	133.0	133.0	133.0	133.0	133.0	133.0	133.0	133.0	133.0	133.0	138.0

NOTICE: This plat, as recorded in its graphic form, is the official depiction of the subdivided lands described herein and will in no circumstances be recorded in any other graphic or digital form of the plat. There may be additional restrictions that are not recorded on this plat that may be found in the public records of this county.  
Date of last plot revision = April 10, 2008.