

# DEERFOOT TRAIL

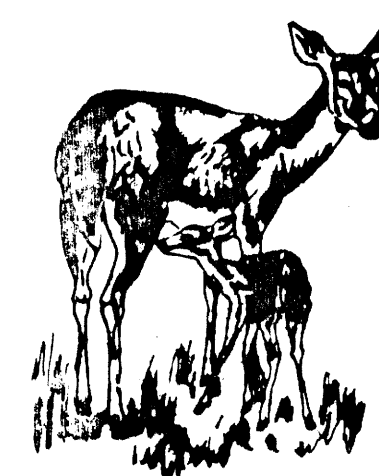


PLATE - 1

- NOTE:** (in all water shown)
1. Water's Edge as per Sept. 8, 1877 Actual F.M. Laying.
  2. Approx. Ordinary High Water Line Established by VERNALINE LAMARINE ONLY.
  3. Approx. Ordinary High Water Line as shown on this map is for COMPARISON OF E. CHANGES ONLY, and should not be construed as the actual boundary between the island owner and THE STATE OF FLORIDA.

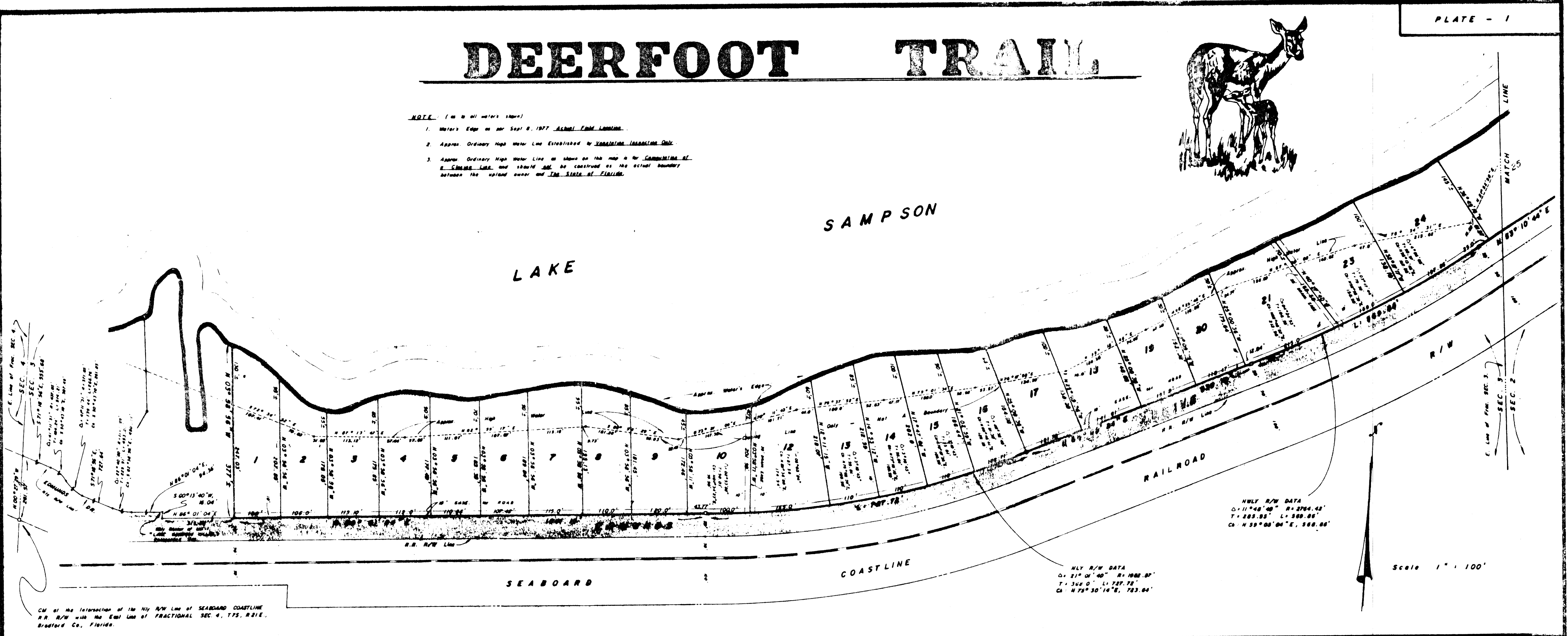
SAMPSON

LAKE

RAILROAD

COASTLINE

SEABOARD



ONLY R/W DATA  
 O: 11°48'40" R: 2764.42'  
 T: 283.93' L: 589.86'  
 CA: N 53°08'04"E, 589.86'

ONLY R/W DATA  
 O: 21°04'40" R: 1982.87'  
 T: 346.0' L: 727.78'  
 CA: N 75°30'14"E, 727.78'

Scale 1" = 100'

CM of the Intersection of the Nly R/W Line of SEABOARD COASTLINE  
 R.R. R/W with the East Line of FRACTIONAL SEC. 4, T. 7S, R. 2E,  
 Bradford Co., Florida.