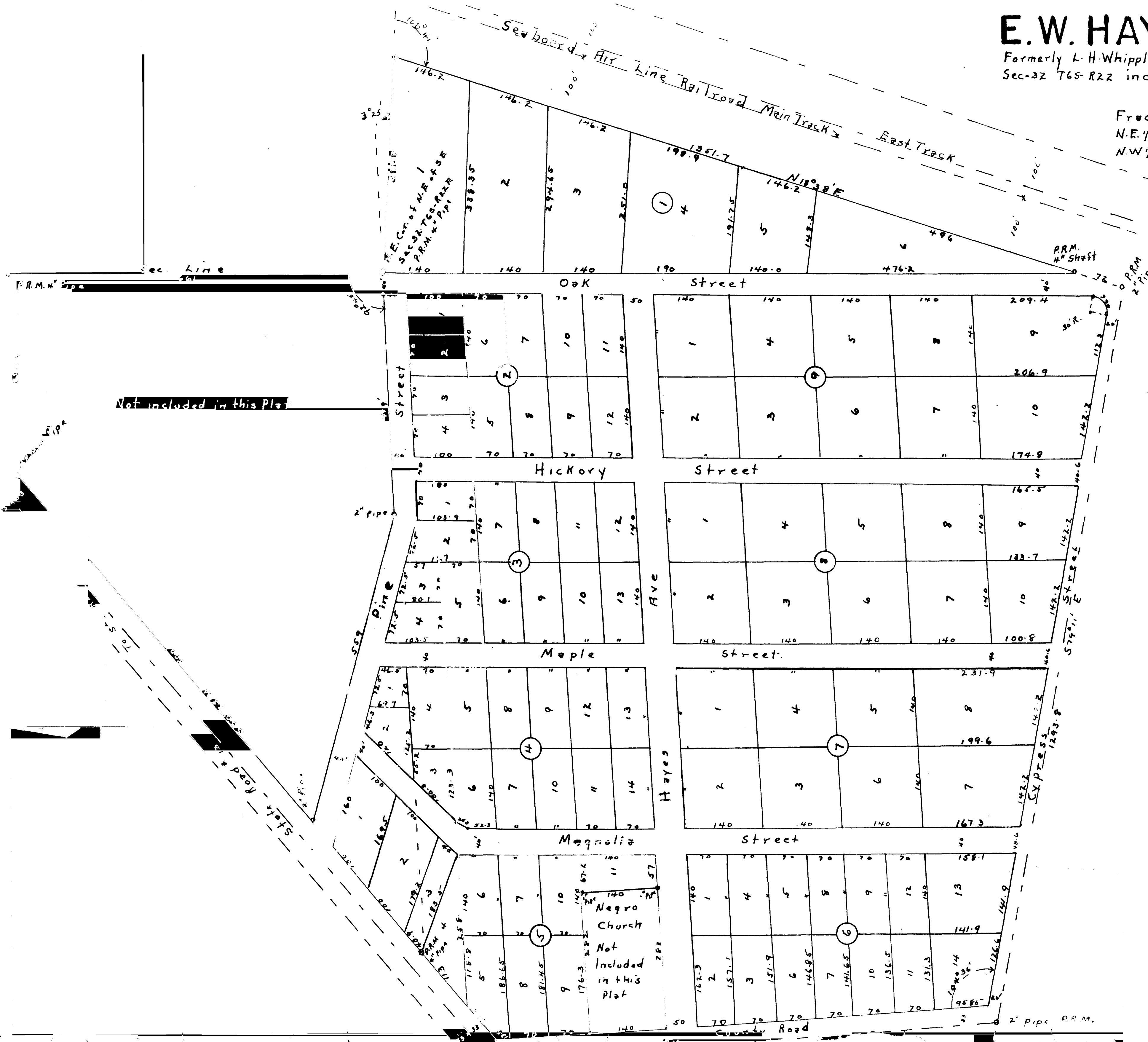


E.W. HAYES, SUB-DIV.

Formerly L.H. Whipple Sub Div. with a portion of SE 1/4 of NE 1/4 Sec-32 T6S-R22 included.

Description
 Fractional Portions of S.E. 1/4 of N.E. 1/4 and
 N.E. 1/4 of S.E. 1/4 Sec 32- and portion of
 N.W. 1/4 of S.W. 1/4 Sec. 33. T6S- R22 E as shown
 on this Plat.



I DO HEREBY CERTIFY THAT WE ARE THE OWNERS
 IN FEE SIMPLE OF THE LAND DESCRIBED HEREON
 AND DO HEREBY DEDICATE TO THE USE OF THE PUBLIC
 FOREVER THE STREETS AS SHOWN ON THIS PLAT

E.W. Hayes
Ruby A. Hayes

THIS CERTIFIES THAT THIS PLAT WAS PRESENTED TO THE BOARD OF
 COUNTY COMMISSIONERS OF BRADFORD COUNTY FLORIDA, AND APPROVED
 BY THEM FOR RECORD ON THE 2ND DAY OF DECEMBER A.D. 1945.

ATTEST
M.B. H. H. H.
 CHAIRMAN

NOVEMBER 15, 1946. PERSONALLY APPEARED before me
 E.W. HAYES his wife RUBY A. HAYES and they acknowledged to me
 the foregoing declaration for the purposes therein expressed and
 further certify that they did not make any agreement with me to be the
 said E.W. HAYES, PERSONALLY APPEARED before me on SEPARATE
 PRIVATE EXAMINATION TAKEN AND MADE BY AND BEFORE ME SEPARATELY AND
 I HEREBY ACKNOWLEDGE THAT SHE REQUESTED THE FOREGOING
 PLAT FOR THE PURPOSE OF ESTABLISHING ALIENATION AND CONVEYING ALL
 HER TITLE, AND INTEREST THEREIN TO THE LANDS DESCRIBED THEREIN
 BY EXECUTED S.D. DEED IN AND TO THE LANDS DESCRIBED THEREIN
 TO HER SEPARATE AND VOLUNTARILY AND WITHOUT
 ANY UNLAWFUL CONSTRAINT AFFILIATION OR FEAR OF FROM HER SAID HUSBAND
 E.W. HAYES, AND S.D. AT STANFORD BRADFORD COUNTY FLORIDA, THIS 10TH DAY
 OF NOVEMBER, 1946.

THOMAS J. CLARK, CLERK OF THE COUNTY CLERK OF BRADFORD COUNTY FLORIDA DO
 CERTIFY THAT THIS FOREGOING PLAT COMPLIES WITH THE PROVISIONS OF
 STATUTES 1941 AND WAS FILED IN MY OFFICE FOR RECORD ON THE
 15TH DAY OF DECEMBER 1945 AND RECORDED IN PUBLIC RECORDS OF SAID COUNTY ON THE
 15TH DAY OF DECEMBER 1945. IN WITNESS WHEREOF I HAVE HEREON SET MY
 HAND AND SEAL OF OFFICE AT STANFORD BRADFORD COUNTY FLORIDA, THIS 15TH DAY
 OF DECEMBER 1945.

Thomas J. Clark
 COUNTY CLERK

Henry O. Dwyer
 COUNTY CLERK