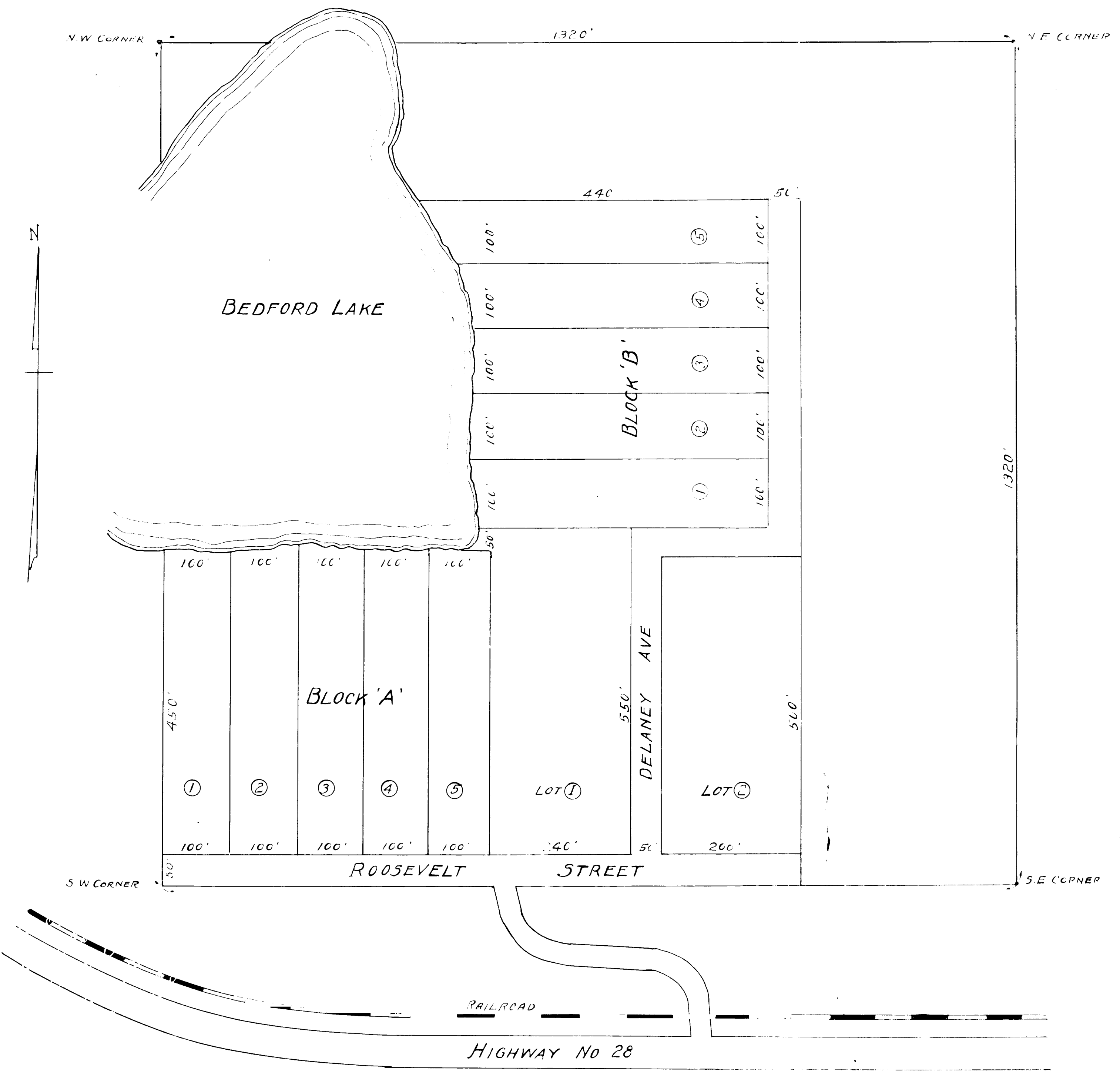


THE HAVEN
BEDFORD LAKE



DEDICATION

I do hereby certify that I am the owner in fee simple of the land described hereon and do hereby dedicate to the use of the public forever the streets as shown on this plat.

_____ Witness _____ seal
 _____ Witness _____ seal

On this 8 day of July, 1937 personally appeared W. S. Sibley, single, to me well known, and he acknowledged that he made the foregoing dedication for the purpose therein expressed witness my hand and official seal at Starke, Bradford County, Florida the day and year first above written.

 My Commission expires _____

Accepted and approved by the Board of County Commissioners of Bradford County Florida

Date _____

This is to certify that this is a correct representation of the hereon described land and subdivision thereof and that permanent monuments have been set as required by law and as shown on this plat.

DESCRIPTION.

NW 1/4 OF NE 1/4 Section 13, Township 10 South, Range 22 East-Containing 40 Acres More or Less. Bradford County, Florida

Scale 1" = 110'