

MAP SHOWING BOUNDARY SURVEY

OF LANDS LYING IN SECTIONS 29, 30, 31 AND 32, TOWNSHIP 7 SOUTH, RANGE 22 EAST OF BRADFORD COUNTY, FLORIDA.

ORDERED BY: RALPH BRYAN, REALTOR

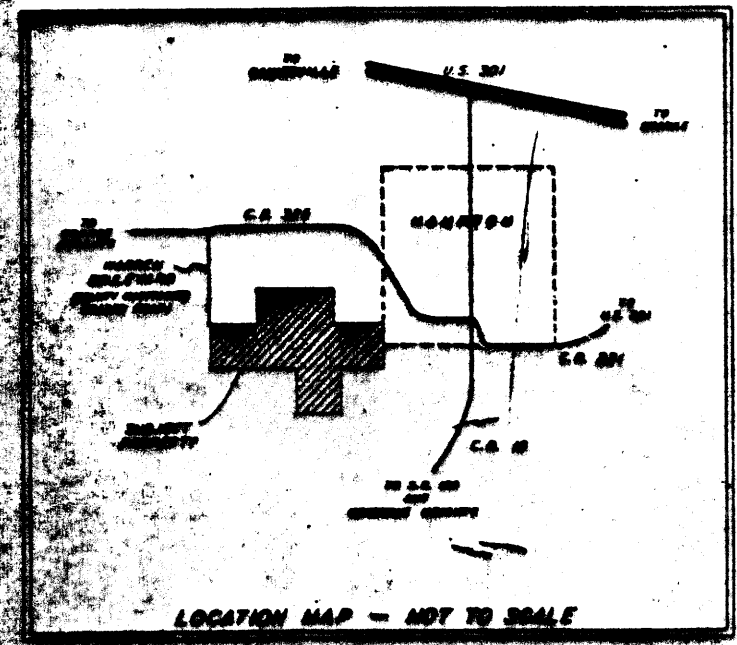
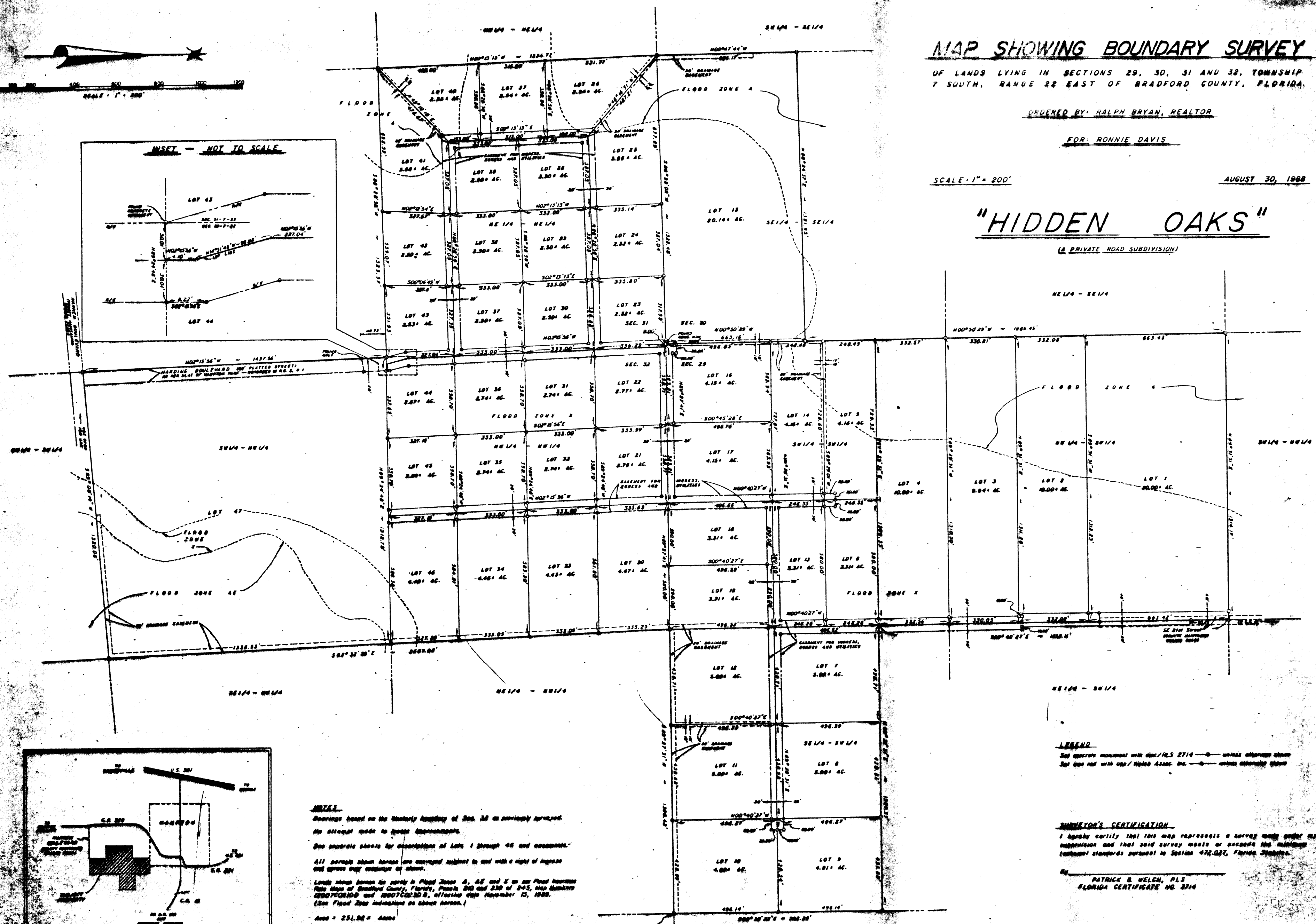
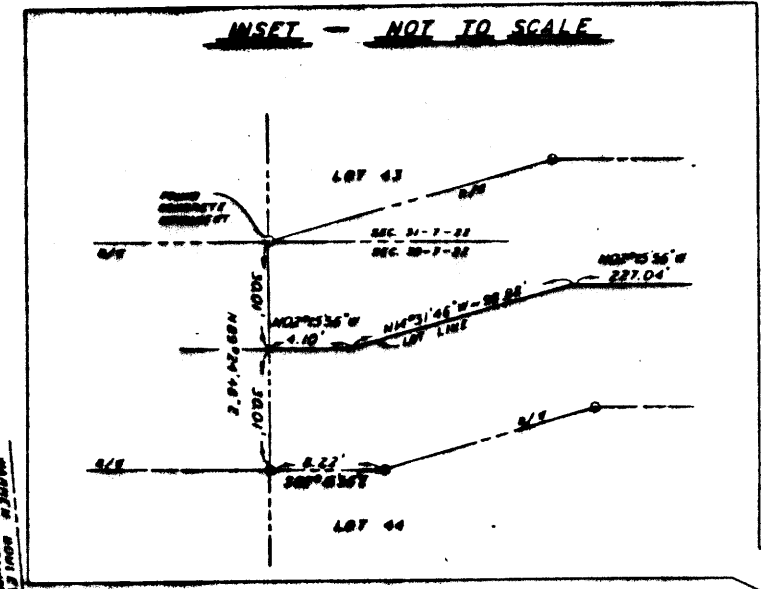
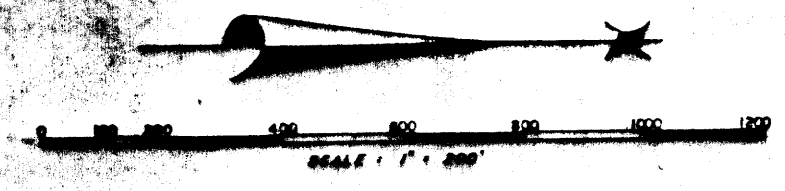
FOR: RONNIE DAVIS

SCALE: 1" = 200'

AUGUST 30, 1988

"HIDDEN OAKS"

(A PRIVATE ROAD SUBDIVISION)



NOTES

Bearings based on the Meridian bearing of Sec. 32 as previously surveyed. No attempt made to locate monuments.

See separate sheets by description of Lots 1 through 46 and occupants.

All parcels shown herein are conveyed subject to and with a right of ingress and egress over adjacent lands.

Lots 1 through 46 are shown in Flood Zones A, AE and X as set forth in the maps of Bradford County, Florida, Plans 890 and 830 of 845, Map Numbers 000700100 and 000700300, effective date November 15, 1988. (See Flood Zone indications on sheets herein.)

Area = 251.00 ± Acres

Reservations shown herein are to be maintained by the "Hidden Oaks" Home Owners Association and not by Bradford County. The restrictions are private unless otherwise shown.

LEGEND

See separate monument with doc./NLS 2714 — unless otherwise shown

See this map with map/Maple Assoc. Inc. — unless otherwise shown

SURVEYOR'S CERTIFICATION

I hereby certify that this map represents a survey made under my supervision and that said survey meets or exceeds the minimum technical standards pursuant to Section 472.007, Florida Statutes.

BY: PATRICK B. WELCH, PLS
FLORIDA CERTIFICATE NO. 2714

PATRICK B. WELCH & ASSOCIATES, INC.
LAND SURVEYING, PLANNING & BOUNDARY SERVICES
P.O. BOX 802 200 WEST MACARTHUR STREET
STARBUCK, FLORIDA 32081 (904) 861-8888