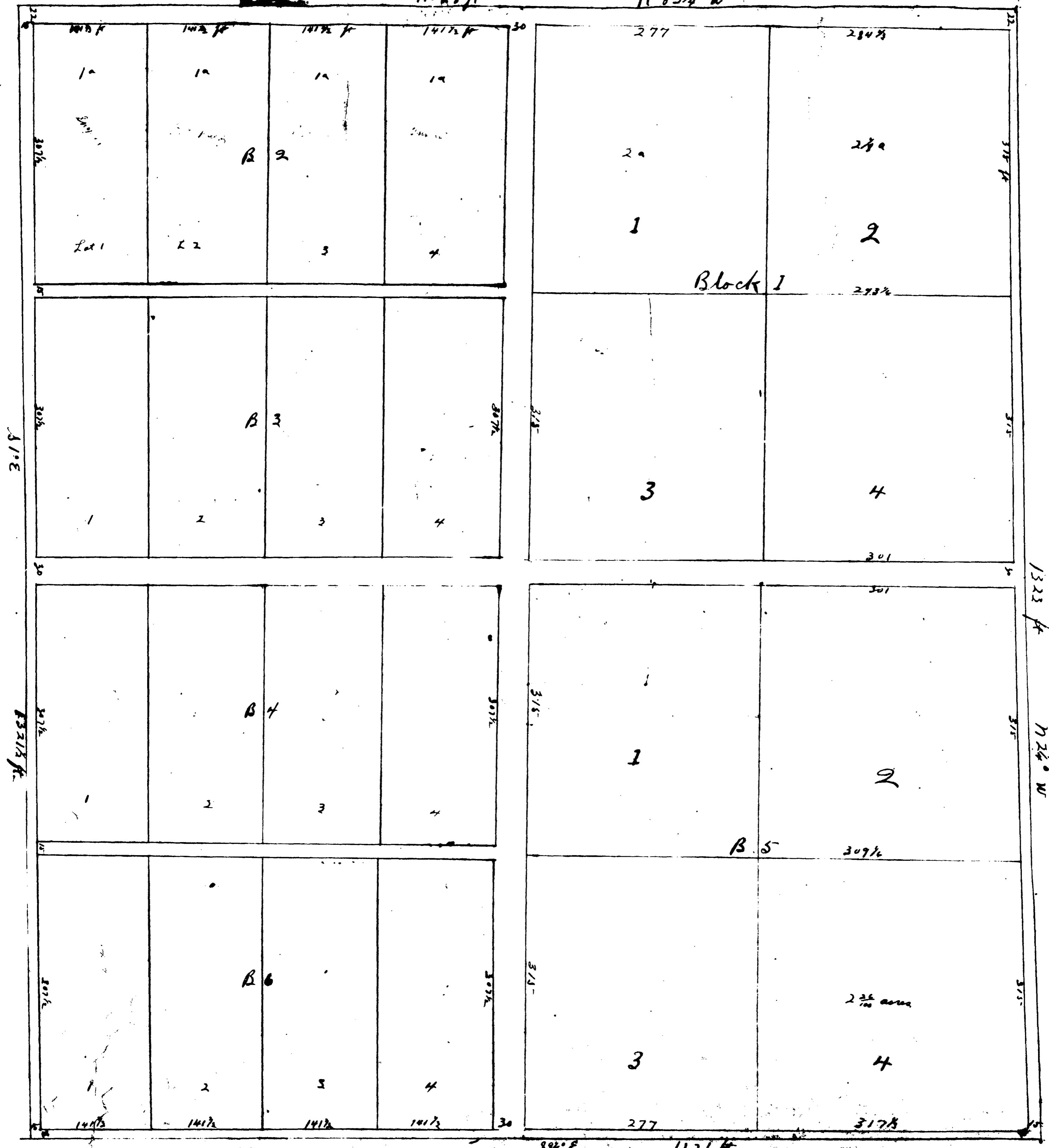


N

1118.8 ft

N 83 3/4° W



**J.M. JOHNS SUBDIVISION**

Being the NE 1/4 of the NE 1/4 of Sec 33 T6S of R 22E

Surveyed by H.C. & Lagergren

Plat carried by  
J.M. Johns July 9<sup>th</sup> 1898

0 50 100 200 300  
Scale ft

Filed + Recorded this  
9<sup>th</sup> day of July 19<sup>th</sup> 19<sup>th</sup>  
H.W. Alderman  
Att'y