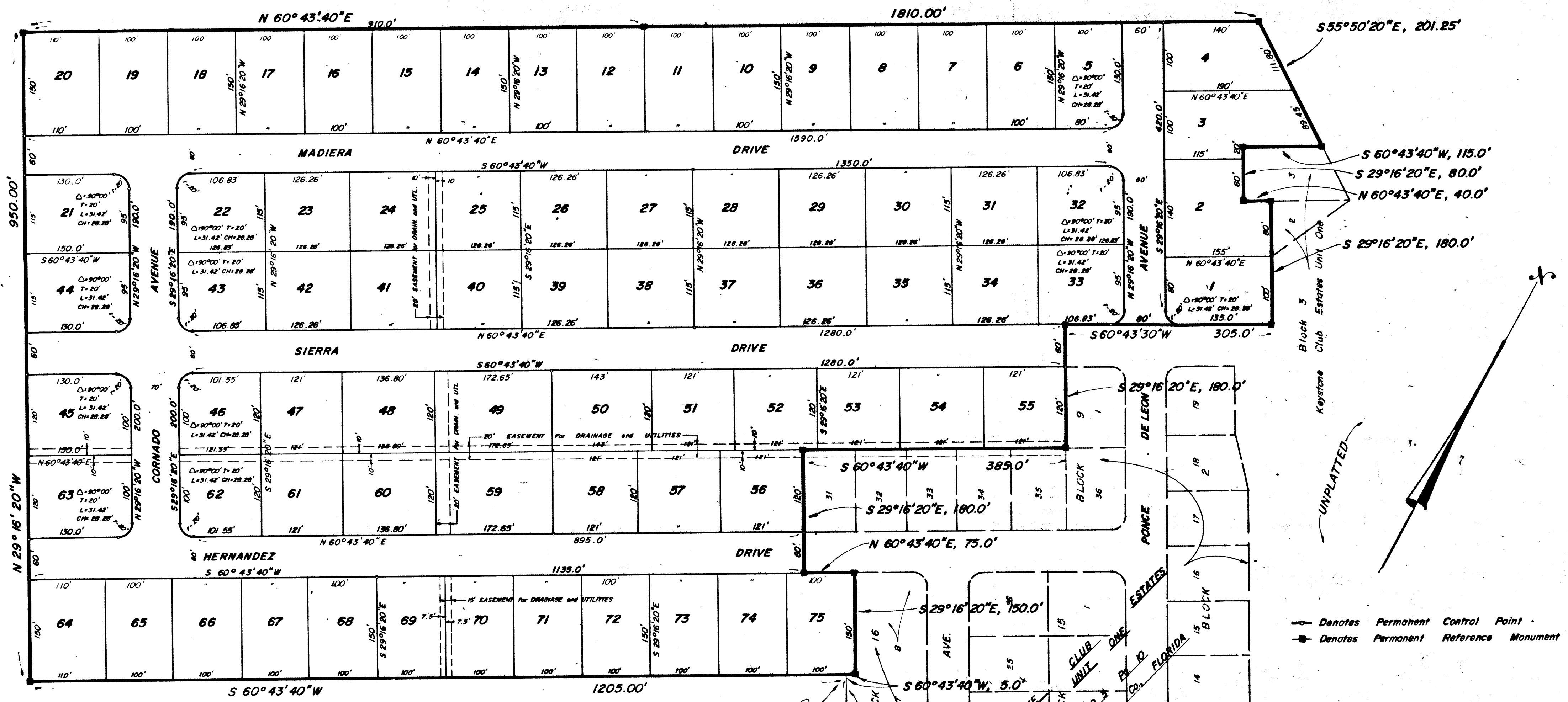


KEYSTONE CLUB ESTATES UNIT ONE REPLAT

OF PORTIONS OF BLOCK'S 3, 4, 5, 6, 7, 8, 9, 10, 11, 12, 13, 14, TRACT B and SITUATED IN SECTION 24, T8S, R22E., ALL BEING IN BRADFORD COUNTY, FLORIDA

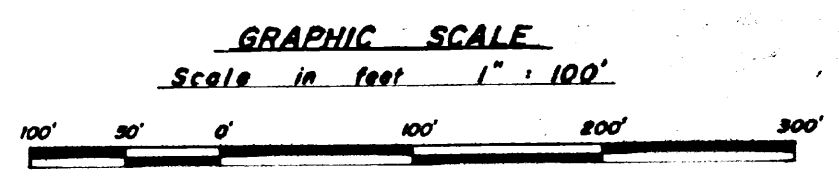


UNPLATTED

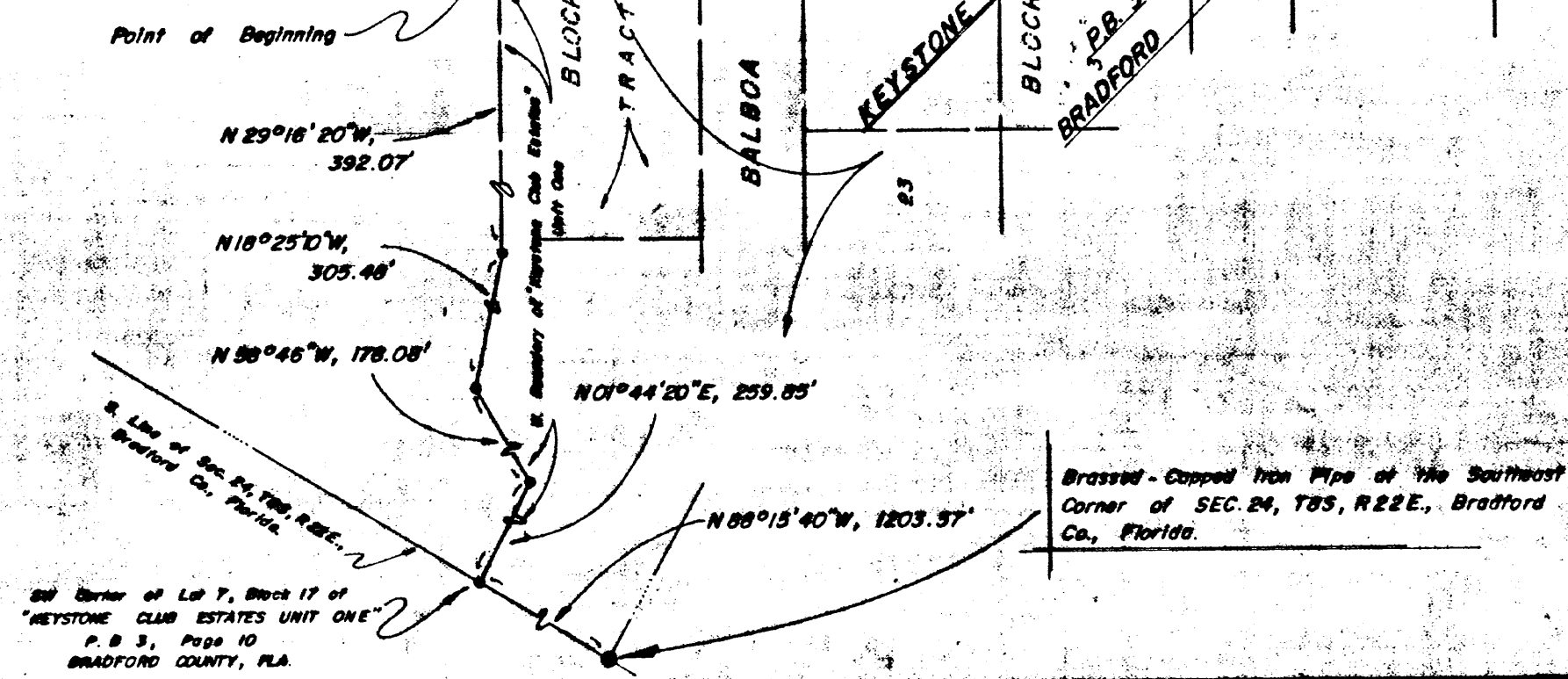
UNPLATTED

UNPLATTED

UNPLATTED



- Denotes Permanent Control Point
- Denotes Permanent Reference Monument



Brass - Copied Iron Pipe at the Southeast Corner of SEC. 24, T8S, R22E., Bradford Co., Florida.

See Corner of Lot 7, Block 17 of KEYSTONE CLUB ESTATES UNIT ONE P. 3, Page 10 BRADFORD COUNTY, FLA.

KEYSTONE CLUB ESTATES UNIT ONE REPLAT

OF PORTIONS OF BLOCK'S 3, 4, 5, 6, 7, 8, 9, 10, 11, 12, 13, 14, TRACT B and SITUATED IN SECTION 24, T8S, R 22E., ALL BEING IN

BRADFORD COUNTY, FLORIDA

CAPTION

A tract of land situated in Section 24, Township 8 South, Range 22 East, Bradford County, Florida; said tract being more particularly described as follows: Commence at a brass-capped iron pipe at the Southeast corner of said Section 24 and run N 88°15'40"W, along the South line of said Section 24 a distance of 1203.57 feet to the Southwest corner of Lot 7 of Block 17 of Keystone Club Estates Unit One, a subdivision as recorded in Plat Book 3, Page 10 of the public records of Bradford County, Florida; thence run along the Westerly boundary line of said Keystone Club Estates Unit One with the following courses and distances: N 01°44'20"E, 259.85 feet; N 58°46'00"W, 178.08 feet; N 18°25'10"W, 305.48 feet; N 29°16'20"W, 392.07 feet to the point of beginning; thence run S 60°43'40"W, 1205.00 feet; thence run N 29°16'20"W, 950.0 feet; thence run N 60°43'40"E, 1810.0 feet; thence run S 55°50'20"E, 201.25 feet to the Northwesterly line of Lot 3 of Block 3 of said Keystone Club Estates Unit One; thence run S 60°43'40"W, along said Northwesterly line, 115.0 feet; thence run S 29°16'20"E, 80.0 feet to the Southeasterly line of said Lot 3 of Block 3; thence run N 60°43'40"E, along said Southeasterly line, 40.0 feet; thence run S 29°16'20"E, 180.0 feet; thence run S 60°43'40"W along the Northwesterly right-of-way line of Sierra Drive 305.0 feet; thence run S 29°16'20"E, along the westerly line of Lot 1 of Block 9 of said Keystone Club Estates Unit One, 180.0 feet to the most southerly corner of said Lot 1, Block 9; thence run S 60°43'40"W, along the Northwesterly line of Lots 35, 34, 33, 32 and 31 of said Block 9 a distance of 385.0 feet to the Northwest corner of said Lot 31; thence run S 29°16'20"E, along the Southwesterly line of said Lot 31 and a prolongation of said Lot 31 a distance of 180.0 feet to the Southerly right-of-way line of Hernandez Drive; thence run N 60°43'40"E, along said Southerly right-of-way line, 75.0 feet; thence run S 29°16'20"E, 150.0 feet; thence run S 60°43'40"W, 5.0 feet to the Point of Beginning.

BRADFORD COUNTY ZONING BOARD APPROVAL

Approved by the Bradford County Zoning Board this 26 day of Sept. A.D. 1978.

Signed: [Signature] Chairman

COUNTY ATTORNEY'S APPROVAL

Date: Oct. 6, 1978 Signed: [Signature] County Attorney

COUNTY SURVEYOR'S APPROVAL

Date: Oct. 6, 1978 Signed: [Signature] M. G. McMillan



ADOPTION AND DEDICATION

This is to certify that KEYSTONE DEVELOPERS OF BRADFORD, INC., a corporation under the laws of the State of Florida, is the lawful owner of the lands described in the Caption hereon and that it has caused the same to be surveyed and subdivided and this plat, made in accordance with said survey is hereby adopted as the true and correct plat of said lands, and Drives, Courts and all easements for drainage and utilities shown on said plat are hereby irrevocably and without reservation dedicated to Bradford County and its successors. In witness whereof KEYSTONE DEVELOPERS OF BRADFORD, INC., has caused these presents to be signed by its President and Secretary respectively, by and with the authority of its Board of Directors in its name and with its Corporation seal affixed this day of A.D. 1978.

KEYSTONE DEVELOPERS OF BRADFORD, INC.,

witness [Signature] President [Signature] Secretary

STATE of FLORIDA COUNTY of BRADFORD

I hereby certify that on this day personally appeared before me, an officer duly authorized to administer oaths and take acknowledgements, Jack M. Courtney and Marilyn R. Courtney, Title President and Title Secretary, respectively of KEYSTONE DEVELOPERS OF BRADFORD, INC., under the laws of the State of Florida, to me well known to be the persons described in and who executed the foregoing dedication and who severally acknowledged before me that they executed the same freely and voluntarily as such officers for the uses and purposes therein expressed and that they affixed hereto the official seal of said Corporation.

Witness my signature and official seal this 24th day of July A.D. 1978.

[Signature] Notary Public, State of Florida at Large My commission expires

Notary Public, State of Florida at Large My Commission Expires June 4, 1981

APPROVED FOR RECORD

This is to certify that this Plat has been examined and is hereby accepted by the Board of County Commissioners of Bradford County, Florida.

Signed this 6 day of October A.D. 1978. [Signature] Clerk [Signature] Chairman

CLERK'S CERTIFICATE

I hereby certify that this Plat has been examined and that it complies in form with Chapter No. 71-339, Laws of Florida, 1971 and is filed for record in Plat Book 3, Pages 51 and 51 A of the Public Records of Bradford County, Florida, this 6 day of October A.D. 1978.

Signed: [Signature] Clerk [Signature] Chairman

SURVEYOR'S CERTIFICATION

This is to certify that the accompanying plat is a correct representation of lands surveyed, platted and described hereon, that Permanent Reference Monuments have been placed as shown on said plat according to Chapter No. 71-339 Laws of Florida of 1971 and that Permanent Control Points will be placed as shown on said plat in accordance with said laws, that said survey was made under my responsible direction and supervision and that the survey data on said Plat complies with all the requirements of said Chapter.

Signed this 6th day of October A.D. 1978.

By: [Signature] JOSEPH G. KNAPP Reg. Land Surveyor Fla. Cert. No. 2061 Keystone Heights, Florida.

