

Map of "Woodlawn"

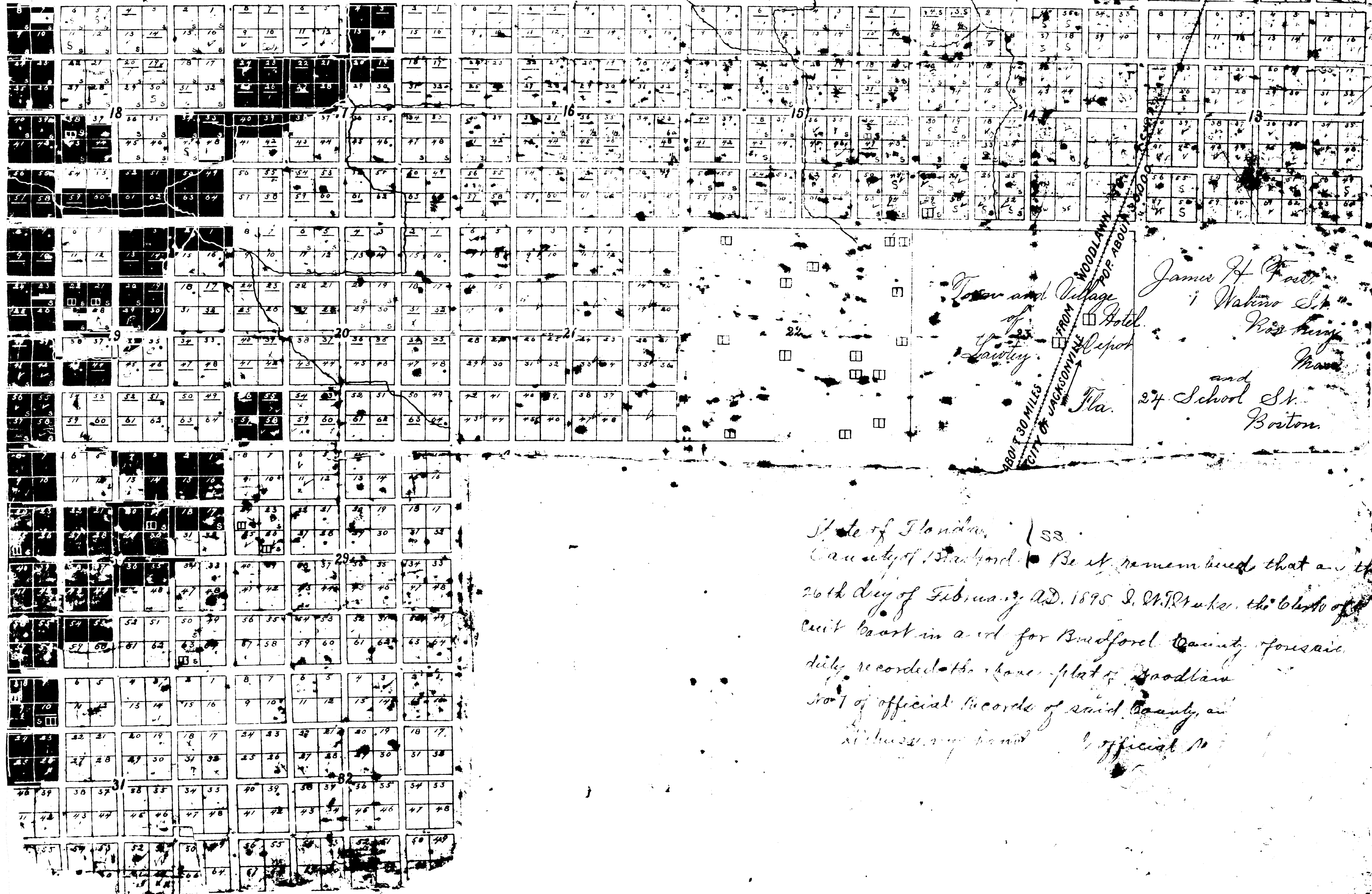
Bradford County  
Florida

Sections 10, 11, 12, 13, 14, 15, 16, 17, 18, 19, 20, 21, 29, 30, 31, 32.

Township 5

Range 22

Streets are laid out 30 feet wide. Land for said streets to be furnished by those who have bought or who may buy the abutting lots. Said lots in either one half of a city street contain 10 acres, more or less.



Town and Village  
of  
Lawley  
Hotel  
Depot  
Fla.

James H. East  
1 Wakino St.  
Roxbury  
Mass.  
and  
24 School St.  
Boston

State of Florida, 1895.  
County of Bradford. Be it remembered that on the  
26th day of February A.D. 1895, J. W. Drake, the clerk of  
Court Court in and for Bradford County, Florida, for and  
duly recorded the same plat of Woodlawn  
out of official records of said County, and  
at this my hand and official seal

