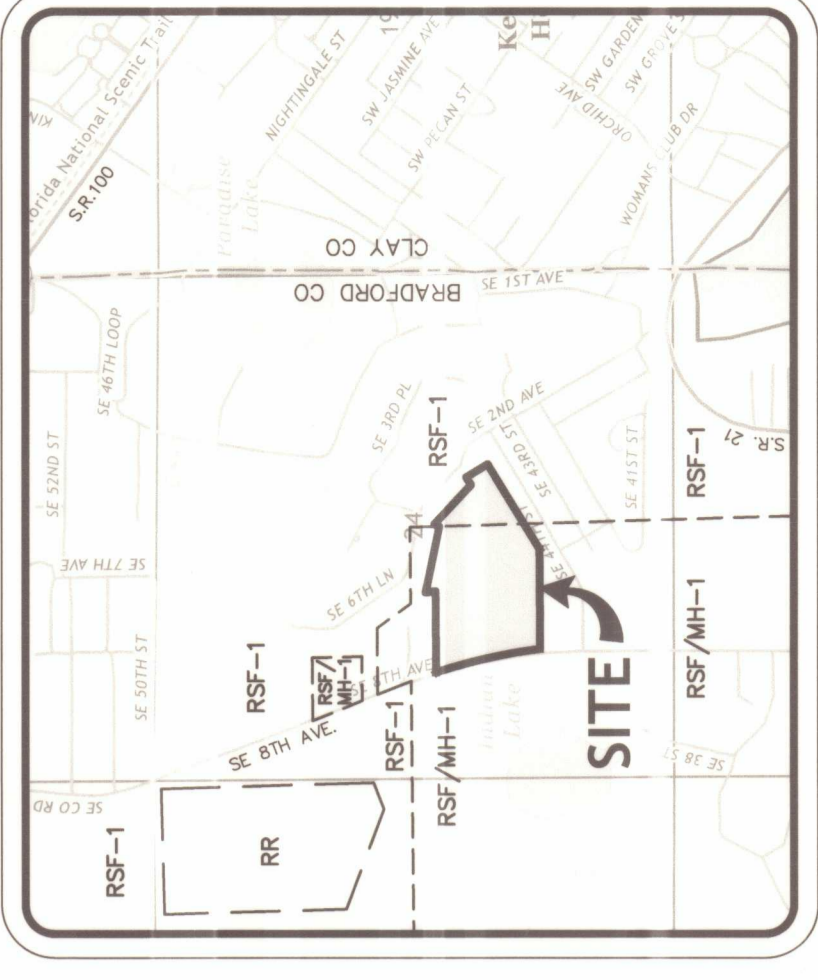


OAKS AT KEYSTONE

A MINOR SUBDIVISION IN
SECTION 24, TOWNSHIP 08 SOUTH, RANGE 22 EAST
BRADFORD COUNTY, FLORIDA



VICINITY MAP
1" = 2000'

CURVE TABLE

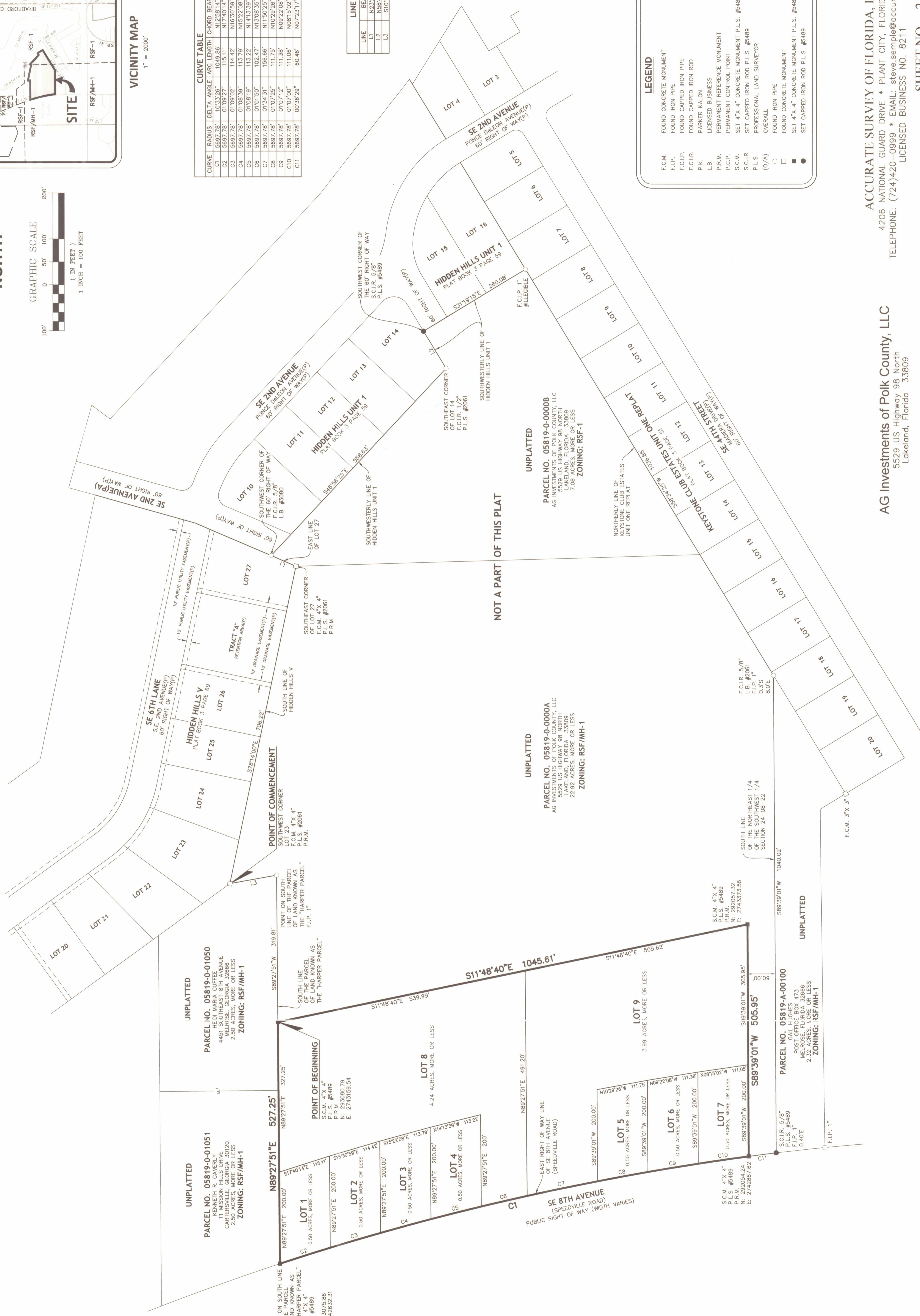
CURVE	RADIUS	DELTA ANGLE	ARC LENGTH	CHORD	BEARING	CHORD LENGTH
C1	5697.78'	01°08'29"	115.11'	115.11'	N17°40'14"W	115.11'
C2	5697.78'	01°08'29"	115.11'	115.11'	N17°40'14"W	115.11'
C3	5697.78'	01°08'29"	114.42'	114.42'	N16°30'59"W	114.42'
C4	5697.78'	01°08'39"	113.79'	113.79'	N15°22'08"W	113.79'
C5	5697.78'	01°08'19"	113.22'	113.22'	N14°13'39"W	113.22'
C6	5697.78'	01°01'50"	102.47'	102.47'	N13°08'35"W	102.47'
C7	5697.78'	01°34'31"	156.66'	156.66'	N11°50'25"W	156.65'
C8	5697.78'	01°07'25"	111.75'	111.75'	N10°29'26"W	111.75'
C9	5697.78'	01°07'12"	111.38'	111.38'	N09°22'08"W	111.38'
C10	5697.78'	01°07'00"	111.06'	111.06'	N08°15'02"W	111.05'
C11	5697.78'	00°36'29"	60.46'	60.46'	N07°23'17"W	60.46'

LINE TABLE

LINE	BEARING	LENGTH
L1	N23°29'57"E	58.87'
L2	N85°40'45"E	84.42'
L3	S10°10'58"E	103.39'

LEGEND

- F.C.M. FOUND CONCRETE MONUMENT
- F.I.P. FOUND IRON PIPE
- F.C.I.P. FOUND CAPPED IRON PIPE
- F.C.I.R. FOUND CAPPED IRON ROD
- P.K. PARKER KALON
- L.B. LICENSED BUSINESS
- P.R.M. PERMANENT REFERENCE MONUMENT
- P.C.P. PERMANENT CONTROL POINT
- S.C.M. SET 4" X 4" CONCRETE MONUMENT P.L.S. #5489 P.R.M.
- S.C.I.R. SET CAPPED IRON ROD P.L.S. #5489
- P.L.S. PROFESSIONAL LAND SURVEYOR
- (O/A) OVERALL
- FOUND IRON PIPE
- FOUND CONCRETE MONUMENT
- SET 4" X 4" CONCRETE MONUMENT P.L.S. #5489 P.R.M.
- SET CAPPED IRON ROD P.L.S. #5489



AG Investments of Polk County, LLC
5529 US Highway 98 North
Lakeland, Florida 33809

ACCURATE SURVEY OF FLORIDA, INC.
4206 NATIONAL GUARD DRIVE * PLANT CITY, FLORIDA 33563
TELEPHONE: (724)420-0999 * EMAIL: steve.semple@accuratesurveyfl.com
LICENSED BUSINESS NO. 8211