

PINEBREEZE

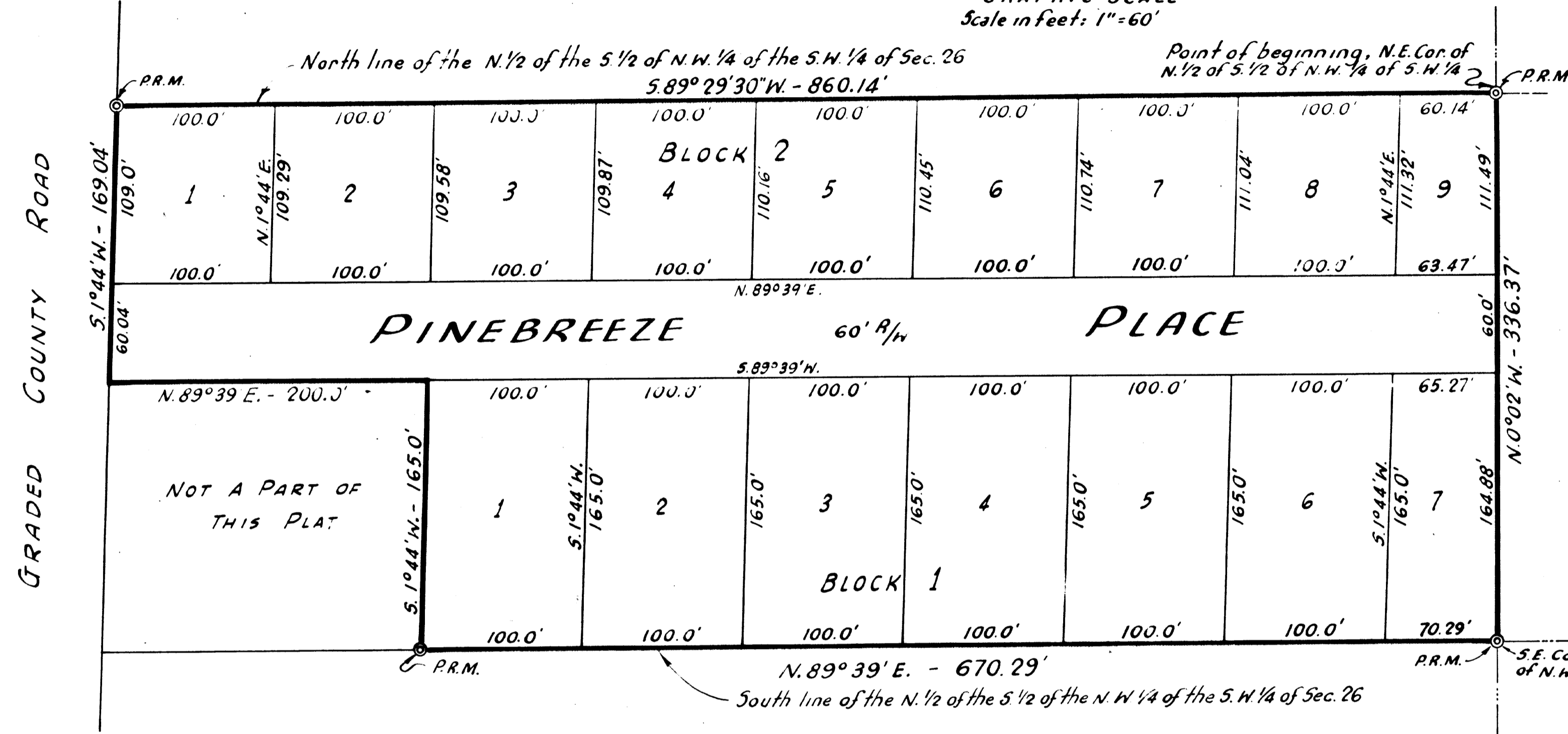
BRADFORD COUNTY, FLORIDA

A SUBDIVISION OF PART OF THE N. 1/2 OF THE S. 1/2 OF THE N.W. 1/4 OF THE S.W. 1/4 OF SECTION 26, TWP. 6-S., RGE. 22 E., BEING MORE PARTICULARLY DESCRIBED IN THE CAPTION.

For Easements and Restrictions see O.R. Book 56 Page 480-482



GRAPHIC SCALE
Scale in feet: 1"=60'



CAPTION:

Commence at a permanent Reference Monument (herein after referred to as P.R.M.) located at the North east corner of the N. 1/2 of S. 1/2 of N.W. 1/4 of S.W. 1/4 of said Section 26 for point of beginning; run thence S. 89° 29' 30" W. along the Northernly Boundary thereof, 860.14 feet to a P.R.M. located on the Easterly Boundary of a Graded County Road; run thence S. 1° 44' W. along said Easterly Boundary, 169.04 feet, run thence N. 89° 39' E., 200.0 feet, run thence S. 1° 44' W., 165.0 feet to a P.R.M. located on the Southernly Boundary of said N. 1/2 of S. 1/2 of N.W. 1/4 of S.W. 1/4, run thence N. 89° 39' E. along said Southernly Boundary, 670.29 feet to a P.R.M. located at the South-east corner of said N. 1/2 of S. 1/2 of N.W. 1/4 of S.W. 1/4, run thence N. 0° 02' W. along the Easterly Boundary of said N. 1/2 of S. 1/2 of N.W. 1/4 of S.W. 1/4, 336.37 feet to point of beginning.

: NOTES :

Permanent Reference Monuments show thus: P.R.M. — ⊙

ADOPTION AND DEDICATION

This is to certify that the undersigned are the lawful owners of the land described in the caption hereon, that they have caused the same to be Surveyed and Subdivided, and that this plat, made in accordance with said Survey, is hereby adopted as the true and correct plat of said lands, and all roads shown upon said plat are hereby irrevocably dedicated to Bradford County, Florida.

In witness whereof these presents are signed this 5th day of April A.D. 1966.

Way A. Price
Betty S. Mathews
Way A. Price
Betty S. Mathews WITNESSES
Way A. Price
Betty S. Mathews

John A. Torode
JOHN A. TORODE
Sarah P. Torode
SARAH P. TORODE (HIS WIFE)
Burford Mitchell
BURFORD MITCHELL
Odessa Mitchell
ODESSA MITCHELL (HIS WIFE)
Albert A. Longchamp Jr.
ALBERT A. LONGCHAMP JR.
Mary B. Longchamp
MARY B. LONGCHAMP (HIS WIFE)

STATE OF FLORIDA, COUNTY OF BRADFORD

I hereby certify that on this day personally appeared before me an officer duly authorized to administer oaths and take acknowledgements, John A. Torode, Sarah P. Torode his wife, Burford Mitchell & Odessa Mitchell his wife, Albert A. Longchamp Jr. & Mary B. Longchamp his wife, to me well known to be the persons described in and who executed the foregoing dedication and who severally acknowledged before me that they executed the same freely and voluntarily for the purposes therein expressed.

Witness my signature and official seal at Starke, in the County of Bradford and State of Florida this 5th day of April A.D. 1966.

Betty S. Mathews
Notary Public State of Florida at Large
My Commission Expires: Aug 19, 1968

CLERKS CERTIFICATE

I hereby certify that this plat has been examined and that it complies in form with Chapter 10275, laws of the State of Florida of 1925, and is filed for record and recorded in Platbook 3 page 27 of the public records of Bradford County, Florida, this 5th day of April A.D. 1966.

Charles A. Farley Clerk
Deputy Clerk

APPROVED FOR RECORD

This is to certify that this Plat has been examined and is hereby accepted and approved by the Board of County Commissioners of Bradford County, Florida. Signed this 5th day of April A.D. 1966.

Charles A. Farley Clerk
BOARD OF COUNTY COMMISSIONERS
Jerome John Chairman

SURVEYORS CERTIFICATE

This is to certify that the above Plat is a correct representation of the lands Surveyed and Platted and described above, that Permanent Reference Monuments have been placed according to the laws of Florida.

Signed this 4th day of April A.D. 1966

M. G. McMILLAN
REGISTERED SURVEYOR
STARKE, FLORIDA
M. G. McMILLAN
Reg. Surveyor Certificate No. 391