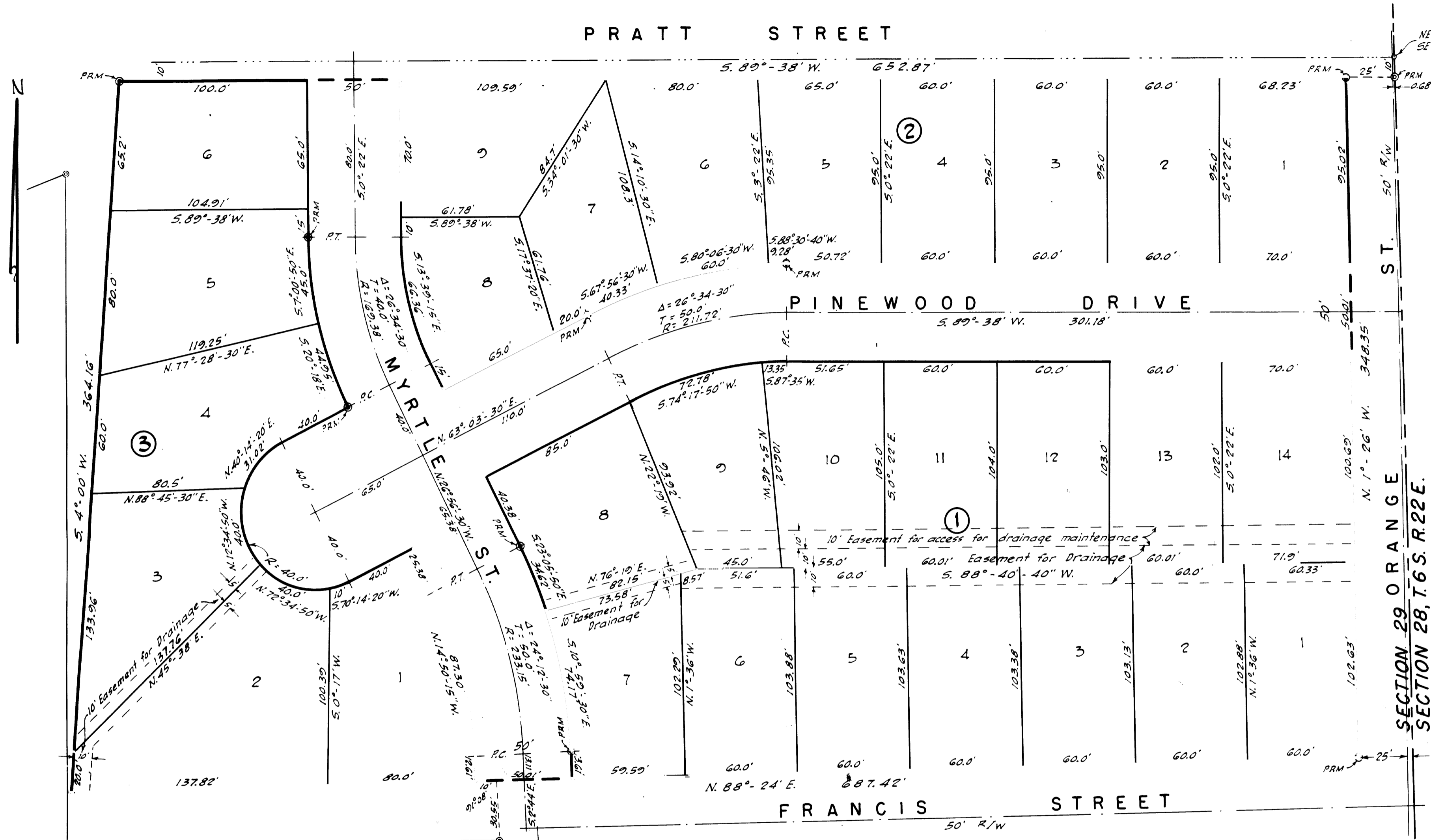


# PINEHAVEN

A RE-SUBDIVISION OF STUMPS ADDITION TO STARKE ACCORDING TO PLAT RECORDED  
IN THE PUBLIC RECORDS OF BRADFORD COUNTY, FLORIDA IN PLAT BOOK 2 PAGE 4



NE corner of the 5/16 of the SE 1/4 of the NE 1/4 of Sec. 29

**ADOPTION AND DEDICATION**  
This is to certify that the undersigned are the lawful owners of the land described in the caption hereof, that they have caused the same to be surveyed and subdivided and that this plat made in accordance with said survey is hereby adopted as the true and correct plat of said lands, and all streets, roads and drives shown upon said plat are hereby irrevocably and without reservation dedicated to the City of Starke, Bradford County, Florida and its successors.  
In witness whereof these presents are signed this 16<sup>th</sup> day of March A.D. 1954

Signed and sealed in the presence of  
*Joseph D. Warren* (1)  
*Betty E. Warren* (1) his wife  
*D. W. Carpenter*  
*D. Thomas*

STATE OF FLORIDA  
COUNTY OF BRADFORD  
I hereby certify that on this day personally appeared before me, an officer duly authorized to administer oaths and take acknowledgements, Joseph D. Warren and Betty E. Warren, his wife, to me well known and known to be the persons described in and who executed the foregoing dedication and who severally acknowledged before me that the executed dedication was voluntarily and freely for the purposes therein expressed.  
Witness my signature and official seal at Starke, Bradford County, Florida, this 16<sup>th</sup> day of March A.D. 1954.

*D. Thomas*  
Notary Public State of Florida at large  
My Commission Expires Dec 9, 1957

APPROVED FOR RECORD  
This is to certify that this plat has been examined and is hereby accepted and approved by the City Council of the City of Starke, Bradford County, Florida.  
Signed this 16<sup>th</sup> day of March A.D. 1954.

CITY COUNCIL OF STARKE, FLORIDA  
 attest: *Carl Johnson* Secretary  
 by: *James A. Lewis* Chairman

**SURVEYORS CERTIFICATE**  
This is to certify that the above plat is a correct representation of the lands surveyed and platted and described above, that permanent reference monuments have been placed according to the Laws of Florida.  
Signed this 16<sup>th</sup> day of March A.D. 1954

*M. E. McMillan*  
Reg. Land Surveyor No. 301

**CLERKS CERTIFICATE**  
I hereby certify that this plat has been examined and that it complies in form with Chapter 10275, Laws of Florida of 1925, and is filed for record and recorded in Plat Book 2, Page 65 of the public records of Bradford County, Florida, this 17<sup>th</sup> day of March A.D. 1954.

*Charles A. Sandy*  
Clerk  
Deputy Clerk

Permanent Reference Monuments shown thus: PRM  
Bearings and distances shown on curves refer to the chord.

