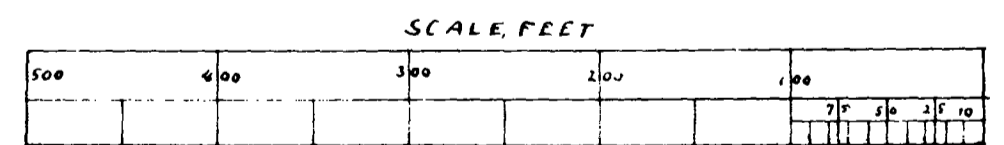
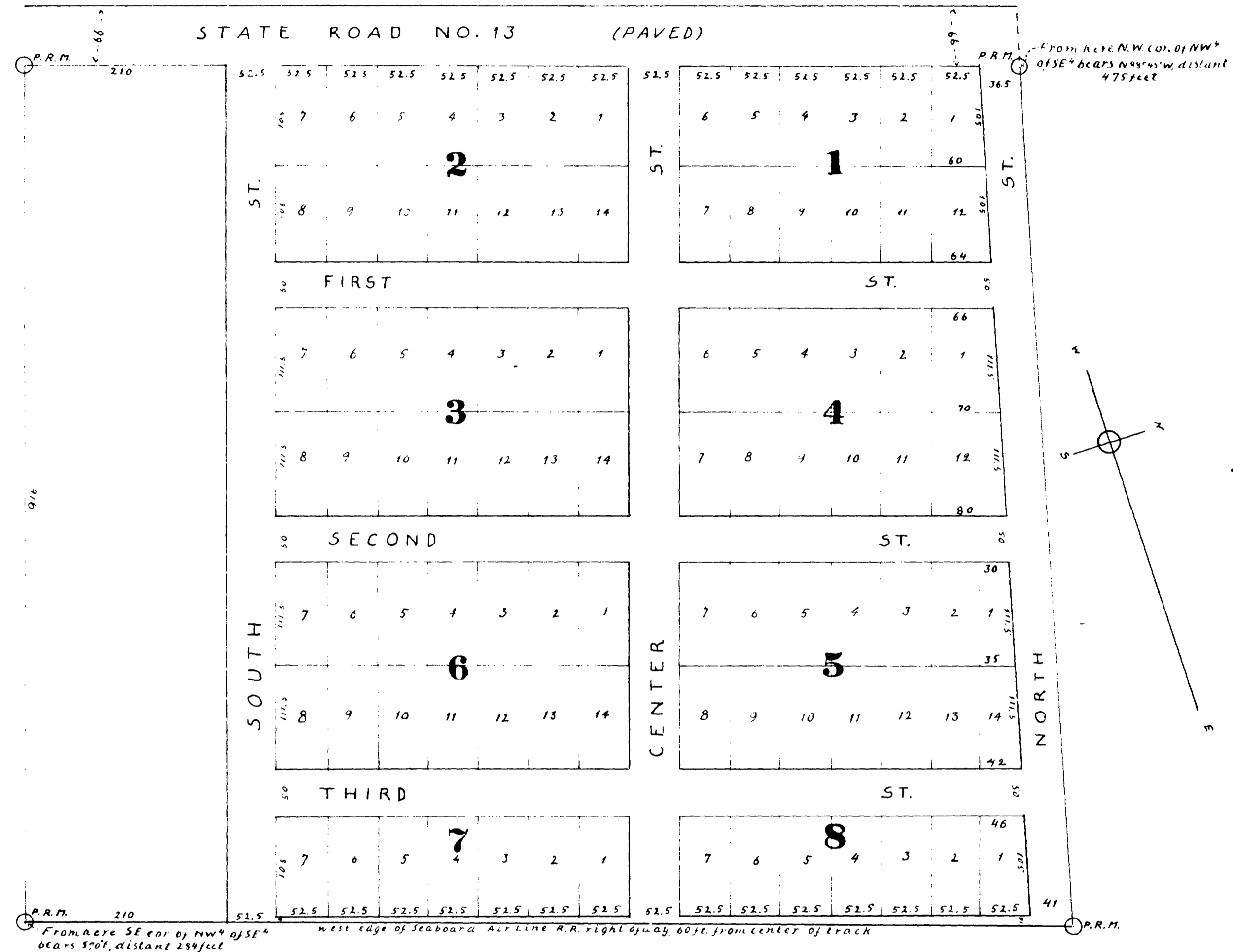


# PINEHURST DEVELOPMENT

of the  
**ROLLINS ESTATES, BRADFORD CO., FLORIDA**

BEING SITUATED IN THE NW<sup>4</sup> OF THE SE<sup>4</sup> OF SEC. 21, TP. 6S., R. 22 E.



I hereby certify that I have surveyed this tract; that I have placed legal monuments at the points indicated, and that the courses and distances as given are correct, to my best knowledge and belief.

*H. E. Lagergren, Surveyor, Starke, Fla.*

October 12, 1925

