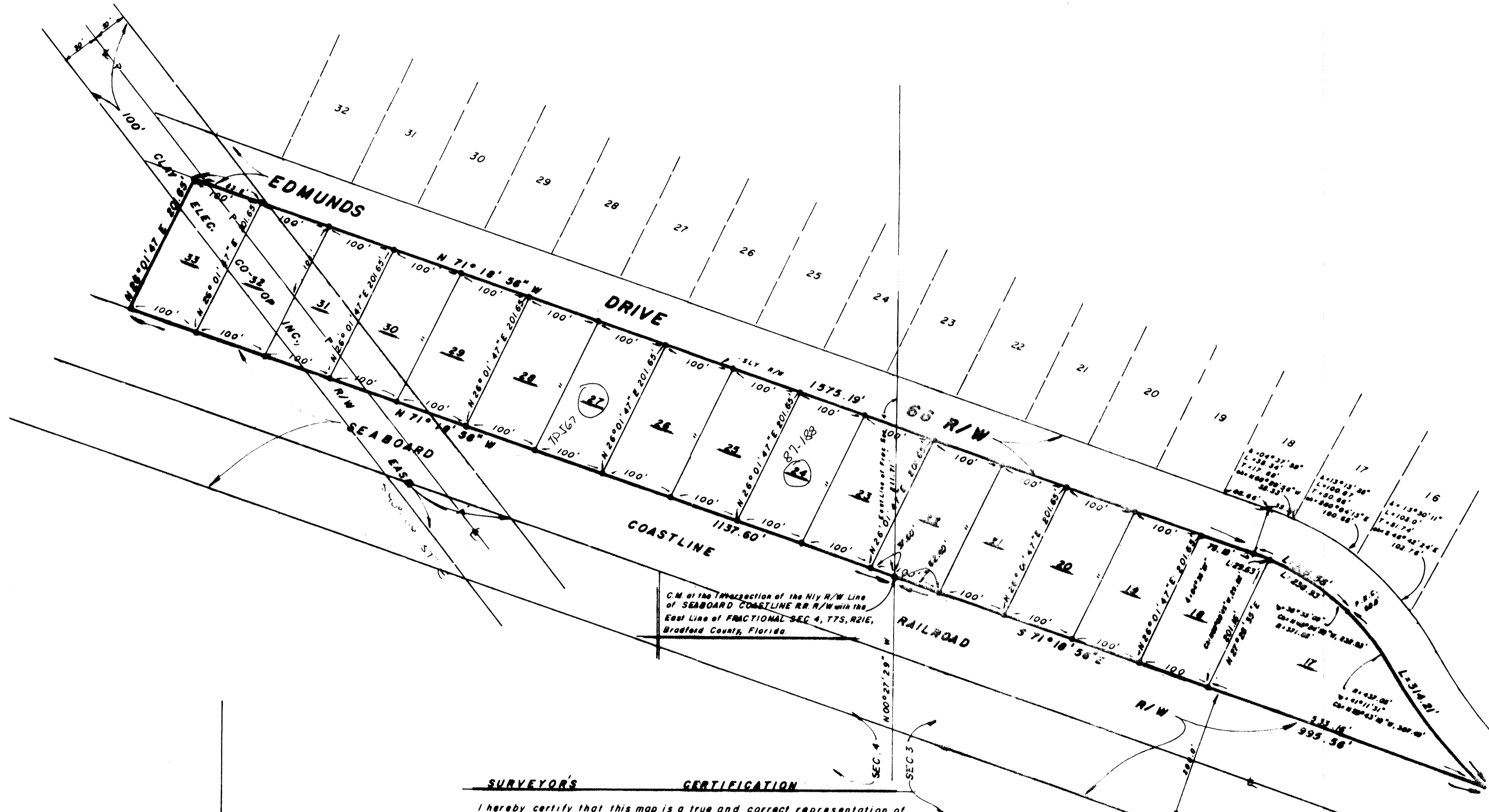


SAMPSON VILLAS  
LAKEVIEW



C.M. at the Intersection of the N1/4 R/W Line  
of SEABOARD COASTLINE RR R/W with the  
East Line of FRACTIONAL SEC 4, T7S, R21E,  
Bradford County, Florida

**SURVEYOR'S CERTIFICATION**

I hereby certify that this map is a true and correct representation of  
a survey made by me and that it meets or exceeds the minimum technical  
standards as set forth by the Florida Board of Land Surveyors.

By: \_\_\_\_\_  
Reg. Land Surveyor Fla. Cert. No. 2061

Date: JAN 25, 1982

Scale 1" = 100'

Denotes Iron Pipe

Denotes Concrete Monument

Bearings shown are projected from Sampson Lake Villas

JOSEPH G. KNAPP  
Land Surveying and Drafting Services  
P.O. Box 306 Keystone Heights Florida