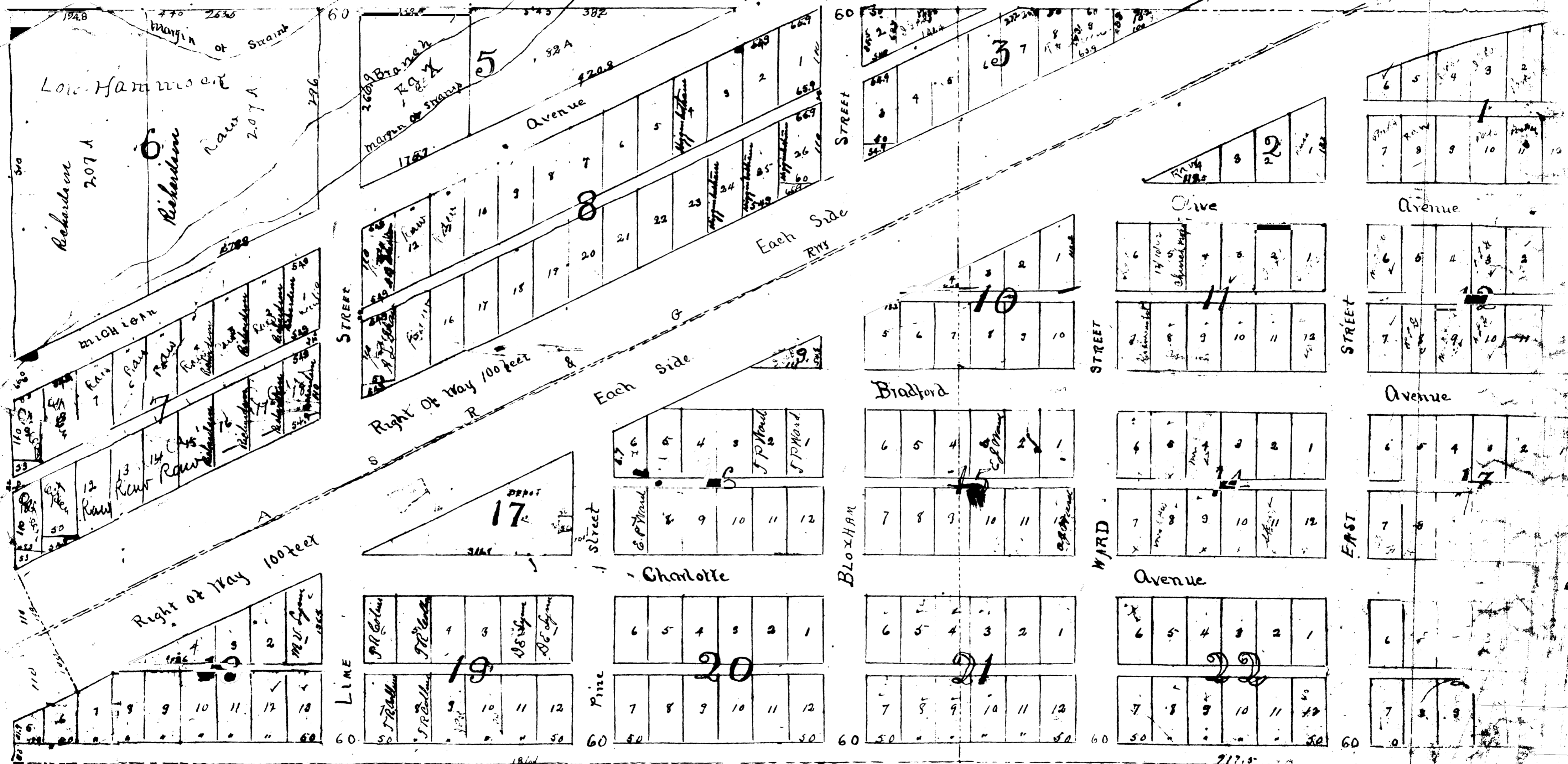


# MAP OF WARD CITY.

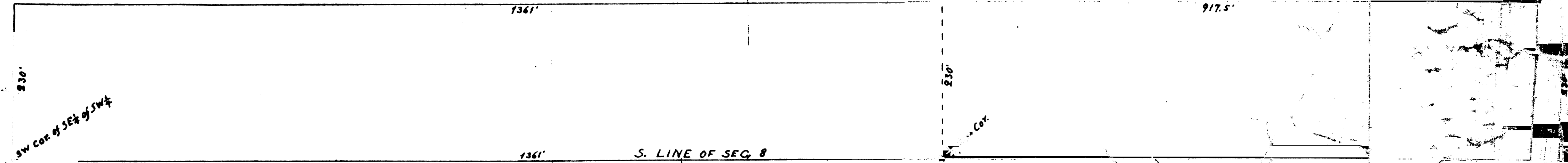
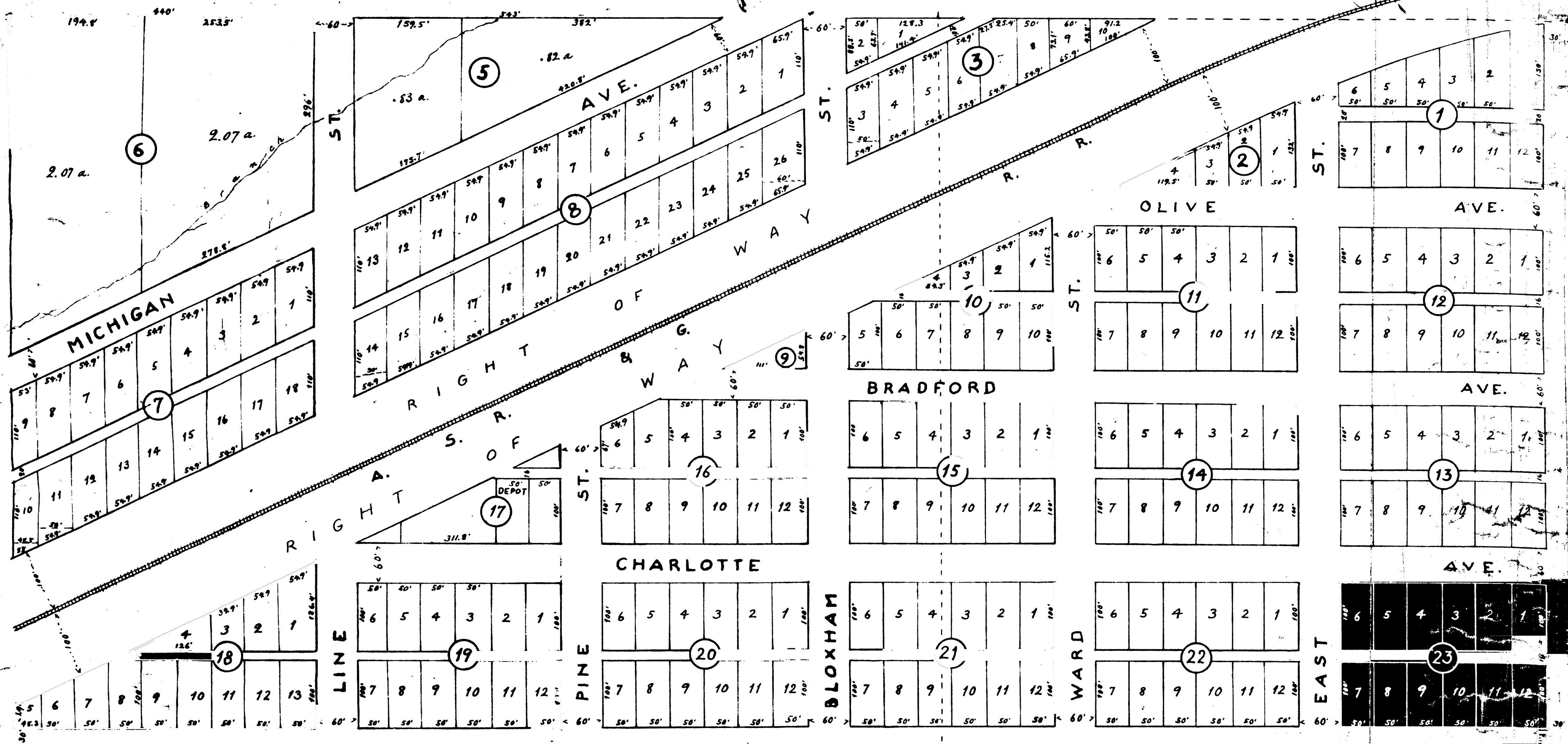
SEC 8 T 7 S R 20 E. BRADFORD CO. ILL.



COR. OF SE 1/4 OF SW 1/4

SEC. COR.

# MAP OF WARD CITY IN SEC. 8, TP 7 S., R. 20 E., BRADFORD CO., FLORIDA



FILED AND RECORDED  
 In Book of Maps, on page 17, Public Records  
 of Bradford County, Florida, this 9<sup>th</sup> day  
 of June, 1904.  
 (Signed) W. T. Weeks, Clerk.  
 (L.S.) By W. E. Wainright, D.C.

Teasing from N. D. Wainwright's plat by J. C. Laguerre,  
 March 12, 1934.